

RESEARCH  
WEEK 2017  
ISCTE-IUL

ISCTE - IUL

MUNDI  
2017

1

## WELCOME MESSAGE

WELCOME TO THE NEWLY  
ARRIVED RESEARCHERS  
AT ISCTE-IUL

## WELCOME MESSAGE

Scientific research is a key component of the activity of ISCTE - Instituto Universitário de Lisboa



**Fernando Luís Machado**

The ISCTE-IUL Vice-Rector for Research

**Every year several highly skilled researchers arrive in our Institute, either Portuguese or of different other nationalities. They come to work at the various Research Units of ISCTE-IUL.**

These Research Units are, along with Departments and Schools, the main organizational structures of ISCTE-IUL. These units develop high quality research, and the most of them have top FCT ratings.

At this meeting, we intend to welcome the newly arrived researchers. We wish them all a very productive and pleasant living in ISCTE-IUL. We count on them to strengthen our research teams and to develop scientific research and publication with international quality.

We hope they will establish cooperative ties with their colleagues at the research units in which they are integrated and expect them to participate in innovative interdisciplinary initiatives with colleagues from other research units.

We also hope that they can enrich the advanced training of ISCTE-IUL, at the masters's and doctorate levels, and that they supervise masters dissertations and doctoral theses.

We count on them to carry out research projects, attract research funds and author high-level international scientific publications.

One of the main ISCTE-IUL's strategic goals is to become a research university with an increasingly higher and internationalized scientific performance, having at its core the advancement of knowledge and its application to institutions, economy and society.

We are very happy that you join us in exploring the future.

RESEARCH  
WEEK 2017  
ISCTE-IUL

2

RESEARCH  
UNITS

2.1

RESEARCH UNITS

BRU-IUL

WELCOME TO

BRU-IUL  
BUSINESS  
RESEARCH UNIT**Fátima Salgueiro**

Director of BRU-IUL

**Dear Researchers,  
welcome to BRU-IUL, the Business Research Unit of ISCTE-IUL.**

The BRU-IUL is a multidisciplinary research center in the broad areas of Business, Economics and Finance. The BRU-IUL is organized into eight Research Groups: Economics; Finance; Financial and Management Accounting; Management and Strategy; Marketing; Modelling in Business and Economics; Organizational Behaviour & Human Resources; Research Methods.

The main goal of BRU-IUL is to promote research at the highest national and international standards, providing a research rich environment to achieve excellence. Over the last years BRU-IUL has been focused on three interweaving aims: to contribute to high quality scientific knowledge; to provide world-class educational programs to national and international students; and to use research capacity to develop solutions for specific corporate and industry problems.

The number of BRU-IUL publications in high impact international journals has been steadily increasing and the research center has already been able to attract PhD students and researchers from 19 different nationalities. Indeed, cultural diversity is seen as very important for pursuing excellence and for being innovative in our research.

On the behalf of BRU-IUL I expect your engagement and active participation in all activities and I look forward for your contribution.

**I am delighted to have you here.**

## RESEARCH FELLOWS

BRU-IUL

BUSINESS RESEARCH UNIT

**Catarina Marques Santos**

catarina\_marques\_santos@iscte-iul.pt

Portuguese

## Personal Information

## Research Interests

Teams, team cognition, team learning, team leadership, temporal dynamics.

## Biographical note

I obtained my Bachelor in Psychology (2008) and my Master in Social and Organizational Psychology (2010) at Instituto Universitário de Lisboa (ISCTE-IUL). During my Master I was an Erasmus student at the Faculty of Social and Behavioural Sciences of Leiden University, The Netherlands. I obtained my Double Doctoral Degree in Human Resources Management and Development (2016) at both Instituto Universitário de Lisboa (ISCTE-IUL) and Faculty of Psychology and Neuroscience of Maastricht University, The Netherlands (FCT doctoral grant: SFRH/BD/79292/2011). My PhD dissertation, "Shared mental models and shared temporal cognitions: Contributions to team processes and team effectiveness", advances knowledge on team research by showing that shared mental models and shared temporal cognitions (i.e., a common understanding among team members about the task, team, and temporal aspects of work) are basic initial conditions that facilitate team creativity and team learning, reduce intragroup conflict, and promote team effectiveness. Further, my PhD dissertation advances knowledge on team research by analyzing teams over time, and by showing that teams have distinct needs over the team lifecycle. At this moment, I am working as a Postdoctoral researcher on the project "Team cognition, adaptation and multiteam systems in dynamic environments" (FCT grant: PTDC/MHCP50/1044/2014).

## Education

## PhD Degree

Human Resources Management and Development (Double Doctoral Degree) Portugal and The Netherlands

## Institution

Instituto Universitário de Lisboa (ISCTE-IUL) and Faculty of Psychology and Neuroscience of Maastricht University

## Year

2016

## Thesis Title

Shared mental models and shared temporal cognitions: Contributions to team processes and team effectiveness

## Previous position

## Title of the Workplan

Team cognition, adaptation and multiteam systems in dynamic environments

PhD STUDENT

BRU-IUL  
BUSINESS  
RESEARCH UNIT



**Helena Rodrigues**

[h\\_mrodrigues@hotmail.com](mailto:h_mrodrigues@hotmail.com)  
Portuguese

#### Personal Information

##### Research Interests

Internal marketing and service quality, medical tourism, wellness and thermal and mineral spas

##### Biographical note

I'm a PhD student in Management-Specialization in Marketing at ISCTE-IUL, Lisbon, Portugal. I received the B.Sc. and M.Sc. degrees in Marketing from ISLA-Lisboa and Laureate. I have worked for global Asset Management Banks and in the Marketing Department for a Global Pharmaceutical Company. My main research are in the area of Internal Marketing and Service Quality, Medical Tourism, Wellness and Thermal and Mineral Spas.

#### PhD Degree-awarding Institution

##### PhD Degree

Management-Specialization in Marketing

##### Host Institution

BRU-IUL

##### Title of the Workplan

In good wellness: Identification of satisfaction and dissatisfactions attributes in Thalassotherapy Spa and Resort

##### Advisors and Affiliations

Ana Brochado, ISCTE-IUL and Mike Troilo, The University of Tulsa, United States

PhD STUDENT

BRU-IUL  
BUSINESS  
RESEARCH UNIT



**Inês Carneiro e Sousa**

[ines\\_carneiro\\_sousa@iscte-iul.pt](mailto:ines_carneiro_sousa@iscte-iul.pt)  
Portuguese

#### Personal Information

##### Research Interests

Age management, age diversity at work, retirement, working conditions

##### Biographical note

I am graduated in Psychology (ISCTE-IUL) and I hold a master in Social and Organizational Psychology (ISCTE-IUL). I was a consultant at AUDAX-IUL working on a project for the Portuguese Association of Companies of Health and Safety at Work. I worked as a research assistant at the Business Research Unit (BRU-IUL) in a project entitled "Team cognition, adaptation and multiteam systems in dynamic environments". Currently, I am a lecturer at LLCT - Laboratório de Línguas e Competências Transversais, the Soft Skills Office at ISCTE-IUL, and a PhD candidate in Management, specialization in Human Resources and Organizational behaviour. Recently, I received a PhD scholarship from Fundação para a Ciência e a Tecnologia (FCT), the Portuguese national funding agency for science, research and technology. I am researching about age diversity at work, its impact for Human Resources Management and for workers.

#### PhD Degree-awarding Institution

##### PhD Degree

Management, specialization in Human Resources and Organizational Behaviour

##### Host Institution

BRU-IUL

##### Title of the Workplan

Leveraging an aging workforce: Contributions to longer and better working lives

##### Advisors and Affiliations

Sara Ramos, ISCTE-IUL and Helena Carvalho, ISCTE-IUL

PhD STUDENT

BRU-IUL  
BUSINESS  
RESEARCH UNIT



**Luis Pedro Miguel**

lprml@iscte-iul.pt  
Portuguese

### Personal Information

#### Research Interests

Food Marketing, consumer behaviour, marketing

#### Biographical note

I hold an Animal Production degree (1993) by Santarem Polytechnic Institute and a MSc on World Animal Production (1994) by the University of Bangor, North Wales. In 2003 I have studied General Management and Marketing Management in 2010. Both post-graduation courses in INDEG-ISCTE. After more than 20 years working on the agro-food sector, I have decided to study what influences the consumer to buy national labelled meat and the extend of the ethnocentrism on Portuguese food costumers. I have started this project in 2015 in order to bring some light into some discussions in a sector I know quite well. At the same time, I am lecturing at ISCTE-IUL as part of a grant. I can say that is one of the most grateful experiences so far.

### PhD Degree-awarding Institution

#### PhD Degree

Management-Marketing

#### Host Institution

BRU-IUL

#### Title of the Workplan

Produced of Portugal” label as a quality cue compared with brand and certification procedures. The role of Ethnocentrism in the fresh meat market.

#### Advisors and Affiliations

Susana Marques, ISCTE-IUL

#### University

ISCTE - Instituto Universitário de Lisboa

#### Country

Portugal

PhD STUDENT

BRU-IUL  
BUSINESS  
RESEARCH UNIT



**Nikolai Witulski**

nwiii@iscte-iul.pt  
German

### Personal Information

#### Research Interests

Corporate corruption, corporate social responsibility, corporate performance ,multilevel analysis, latent variable models, sustainable competitiveness, environmental economics

#### Biographical note

During my bachelor studies, I obtained a double Bachelor degree from Hochschule Pforzheim (BSc in Business Administration/International Marketing) as well as from ISCTE-IUL (BSc in Management). Currently, I'm pursuing an MSc in Economics as well as a PhD in Management (Specialization: Quantitative Methods Applied to Management) at ISCTE-IUL. My research interests are twofold: On the one side, I focus on the exploration of the relationship between sustainability and competitiveness. On the other side, I explore the role of corruption at the business level (EU) and foresee its implications.

### PhD Degree-awarding Institution

#### PhD Degree

Management: Specialization: Quantitative Methods Applied to Management

#### Host Institution

BRU-IUL

#### Title of the Workplan

EU company employees' attitudes towards corruption: A multilevel approach

#### Advisors and Affiliations

José Manuel Gonçalves Dias, ISCTE-IUL

#### University

ISCTE - Instituto Universitário de Lisboa

#### Country

Portugal

## PhD STUDENT

BRU-IUL  
BUSINESS  
RESEARCH UNIT



### Pedro Miguel Garcia de Oliveira

pmgao@iscte-iul.pt  
Portuguese

#### Personal Information

##### Research Interests

Marketing, neuroscience, consumer behaviour, advertising, tourism, quantitative methods

##### Biographical note

I am PhD student in Business Management at BRU / ISCTE-IUL. I have a master degree in Applied Econometrics and Forecasting at ISEG (Lisbon School of Economics and Management), a post-graduation in Marketing Research at ISEG, and a graduation in Economics at Nova SBE (Nova School of Business and Economics). I started to work as a Media Planner in 1999 and then as a Marketing / Media Consultant at Accenture in 2006. In 2010 I was invited to lead the Portuguese office at Ebiquity, a consulting company specialized in marketing analytics. In 2014 I became the founding Partner of Brand Gallery, an agency specialized in design and brand management. In parallel, since 2010, I've been teaching the course units of Media Planning and Audiences, and Data Treatment and Analysis at IADE - Universidade Europeia. Currently, along with my teaching career, I'm focused on neurosciences' application in tourism advertising, by using neurophysiological methods to measure the effects of certain advertising stimuli on individuals, as well as on quantitative methods.

#### PhD Degree-awarding Institution

##### PhD Degree

Business Management

##### University

ISCTE - Instituto Universitário de Lisboa

##### Host Institution

BRU-IUL

##### Country

Portugal

##### Title of the Workplan

Playing with the Brain Through Advertising: Neurophysiological Methods' Application to Tourism

##### Advisors and Affiliations

Paulo Rita, ISCTE-IUL and João Guerreiro, ISCTE-IUL

## PhD STUDENT

BRU-IUL  
BUSINESS  
RESEARCH UNIT



### Ricardo Godinho Bilro

Ricardo\_Bilro@iscte-iul.pt  
Portuguese

#### Personal Information

##### Research Interests

Consumer-brand relationships and engagement, digital marketing and e-Commerce

##### Biographical note

I hold a MSc in Marketing and I'm currently a PhD candidate in Marketing at Instituto Universitário de Lisboa (ISCTE-IUL), Business Research Unit (BRU/UNIDE). My current research interests include consumer-brand relationships and engagement, digital marketing and e-Commerce.

#### PhD Degree-awarding Institution

##### PhD Degree

Management, with specialization in Marketing

##### University

ISCTE - Instituto Universitário de Lisboa

##### Host Institution

BRU-IUL

##### Country

Portugal

##### Title of the Workplan

Mapping consumer-brand engagement

##### Advisors and Affiliations

Sandra M. Correia Loureiro, ISCTE-IUL



2.2

RESEARCH UNITS

CEI-IUL

WELCOME TO

CEI-IUL  
CENTRE FOR  
INTERNATIONAL STUDIES



**Luís Nuno Rodrigues**

Director of CEI-IUL

**Dear Researchers,**

**On behalf of the Centre for International Studies (CEI-IUL), I would like to welcome you to ISCTE-IUL and to our research center.**

The world is changing.

This is not a new idea: the world has never been the same, nor will it ever remain the same as it is at this moment. Heraclitus warned us about this when he said one could not step twice into the same river. The creation of CEI-IUL, in 2013, reflected this concern. Building upon the previous research experience of the Centre for African Studies, we are dedicated to the study of international and global phenomena and we do it from a multi- and inter-disciplinary perspective.

We look into international issues from several different perspectives and one of our distinguishing marks is that we integrate, among the approximately 100 researchers (integrated and associated), political scientists, sociologists, anthropologists, historians and economists. CEI-IUL is organised on a matrix design of regional areas (Africa, Asia & Middle East, Europe & Transatlantic Relations) and research groups: Institutions, Governance and International Relations; Societal and Development Challenges and Economics and Globalization.

## RESEARCH FELLOWS

CEI-IUL

CENTRE FOR INTERNATIONAL STUDIES

**Bruno C. S. Cardoso Reis**bcscr@iscte-iul.pt  
Portuguese

## Personal Information

## Research Interests

History of international relations, decolonization, global security

## Biographical note

I hold a MPhil in Historical Studies from Cambridge University and a PhD in War Studies from King's College. From 2011-2017 I was a research fellow at ICS-Universidade de Lisboa. I'm an adviser to IDN and an associate researcher at the Michael Howard Center for Military History at King's College. Since 2017 I'm an assistant professor at the CIS-IUL, and I have been a guest reader in a number of universities where I have taught courses in the History of International Relations, Security Studies, Globalisation and Global Governance, Leadership and Grand Strategy. I have published on security issues and unconventional conflicts, namely with Andrew Mumford, *The Theory and Practice of Irregular Warfare*. (London: Routledge, 2013).

## Education

## PhD Degree

War Studies

## Country

UK

## Institution

King's College London

## Year

2008

## Thesis Title

Allies and Small Wars

## Previous position

## Position

Research Fellow

## Institution

ICS-Universidade de Lisboa

## Country

Portugal

## Title of the Workplan

Globalization and Governance in International Relations

## RESEARCH FELLOWS

CEI-IUL

CENTRE FOR INTERNATIONAL STUDIES

**Cláudia Generoso de Almeida**

claudiagalmeida@gmail.com

Portuguese

## Personal Information

## Research Interests

Post-war elections, electoral violence, protest, and processes of post-war democratization and peacebuilding in Africa.

## Biographical note

PhD in Political Science, Public Administration and International Relations, my research focuses on post-civil war elections, electoral violence, political protest, and processes of post-war democratization and peacebuilding in Africa. I have been a visiting scholar at the CEA-Universidade Eduardo Mondlane, FCS-Universidade Agostinho Neto, ICS-Universidade de Lisboa. I have also collaborated in several research projects at the ICS-Universidade de Lisboa, and as a country expert at the Varieties of Democracy Project. Currently, I am working as a researcher in the Documentary TV Series Mozambique From War and Peace, directed by the Mozambican film-maker Sol de Carvalho.

## Education

## PhD Degree

Political Science, Public Administration and International Relations

## Country

Spain

## Institution

Universidad Complutense de Madrid

## Year

2017

## Thesis Title

Civil War Recurrence after Elections: The belligerents' action during the implementation of Angola and Mozambique's peace agreements

## Previous position

## Position

Research Assistant

## Institution

Instituto de Ciências Sociais - Universidade de Lisboa

## Country

Portugal

## Title of the Workplan

Electoral Violence and Protest in Africa

## RESEARCH FELLOWS

CEI-IUL

CENTRE FOR INTERNATIONAL STUDIES

**Filipe Nobre Faria**

filipefaria@gmail.com

Portuguese

## Personal Information

## Research Interests

History of political thought, biopolitics, international relations, political economy, european and north-american studies

## Biographical note

I took my bachelor in Political Science and International Relations at the New University of Lisbon. I obtained a master in Philosophy, Politics and Economics at the University of East Anglia and afterwards got my PhD in Political Theory from King's College London. I also taught within the areas of political theory and political economy in the Department of Political Economy at King's College London. My research interests lie at the intersection between philosophy, politics and economics. And I have a particular interest for applying the insights of the behavioural and evolutionary sciences to the field of political and social theory.

## Education

## PhD Degree

Politics

## Country

United Kingdom

## Institution

King's College London

## Year

2016

## Thesis Title

Liberal Democracy and Markets: An Evolutionary Political Theory of Preference Satisfaction

## Previous position

## Position

Teaching Assistant, PhD candidate

## Institution

King's College London

## Country

United Kingdom

## Title of the Workplan

Populism and anti-europeanism in 21st century europe

## RESEARCH FELLOWS

CEI-IUL

CENTRE FOR INTERNATIONAL STUDIES

**João Ferreira Dias**

joaoferreiradias@outlook.pt

Portuguese

## Personal Information

**Research Interests**

Candomblé, yorùbá religion, nostalgia, cultural loss, social memory, hybridism

**Biographical note**

PhD in African Studies with a thesis on Candomblé nostalgic feelings, established memories, aesthetic values, senses and uses of Africa in Salvador and Uberaba. My research interests are based on religious memory, nostalgic feelings, cultural loss, orthopraxis and patterns of thought in Jeje-Nago Candomblé; Yorùbá religion and ethnicity; ritual aesthetic and ritual music on Candomblé. I'm also interested in Portuguese religious field and its transformations, ritual adjustments, New Age, popular religiosity, cultural diplomacy and inter-religious dialogue.

## Education

**PhD Degree**

African Studies

**Country**

Portugal

**Institution**

ISCTE-IUL

**Year**

2016

**Thesis Title**

A África é aqui, no terreiro': horizontes nostálgicos, sentidos da África e outros lugares no Candomblé (jeje-nagô) de Salvador e Uberaba

## Previous position

**Position**

Information not available

**Institution**

Information not available

**Country**

Information not available

**Title of the Workplan**

Crossing Faith in the Atlantic

## RESEARCH FELLOWS

CEI-IUL

CENTRE FOR INTERNATIONAL STUDIES

**Marcelo A. Moriconi Bezerra**

marcelo.moriconi@iscte-iul.pt

Italian

## Personal Information

**Research Interests**

Illegalities; corruption; illegal markets; corruption in sport; violence and insecurity; latin america

**Biographical note**

I am currently a researcher at the Centre of International Studies in Lisbon, Portugal. I had my PhD in Political Science at the University of Salamanca, Spain, in 2009. And also earned a degree in Social Communication and Journalism in the National University of La Plata, Argentina. I was a guest researcher at the London School of Economics in 2008, and carried out postdoctoral research in the Universidad Autónoma Metropolitana (UAM-Xochimilco) in Mexico during 2009 and 2010. My current research interests focus on corruption; violence and citizenship security; illegal markets; Corruption in sport and matchfixing, and organized crime.

## Education

**PhD Degree**

Political Science

**Country**

Spain

**Institution**

Universidad de Salamanca

**Year**

2009

**Thesis Title**

Political Rhetoric and Public Administration Reform in Latin America (Critical and comparative study of the official discourse about reform of civil services in Argentina, Chile and Uruguay)

## Previous position

**Position**

Postdoctoral Research

**Institution**

Universidad Autónoma Metropolitana

**Country**

Mexico

**Title of the Workplan**

Social accomplices of corruption: Understanding social tolerance to corruption in Iberoamerican states (The cases of Argentina, Brazil, Portugal and Spain).

## RESEARCH FELLOWS

CEI-IUL

CENTRE FOR INTERNATIONAL STUDIES

**Marta Patrício**

Marta\_Patricio@iscte-iul.pt

Portuguese

## Personal Information

## Research Interests

African studies; FGM

## Biographical note

I hold a Ph.D. in African Studies since May 2017 at ISCTE, a degree in Political Science and International Relations (2007) by Universidade Nova de Lisboa and a Master in African Studies (2010) by ISCTE-IUL. I am currently a research member of project 'FGM/C, a Multisectorial Academic Program to prevent and combat female Genital Mutilation'. Between 2010 and 2012 I was research assistant at ISCTE-IUL in the project "Identities and Borders in Africa". I'm also a member of ABORNE (African Borderlands Research Network) and in 2012 I was Exchange Visiting Student at the Centre of African Studies - University of Edinburgh.

## Education

## PhD Degree

African Studies

## Country

Portugal

## Institution

ISCTE-IUL

## Year

2017

## Thesis Title

"The dynamics of legal pluralism in Mozambique: case study of Mossurize district"

## Previous position

## Position

Research assistant

## Institution

CEI-IUL, ISCTE

## Country

Portugal

## Title of the Workplan

Multisectorial Academic Programme to prevent and combat Female Genital Mutilation

## RESEARCH FELLOWS

CEI-IUL

CENTRE FOR INTERNATIONAL STUDIES

**Ricardo Falcão**

ricardo\_miguel\_falcao@iscte-iul.pt

Portuguese

## Personal Information

## Research Interests

West Africa; Senegal; gender; youth; intergenerational relations; sexuality; sexual and reproductive rights; human rights, FGM/C; LGBT in Africa

## Biographical note

I am a researcher in the Centre of International Studies in ISCTE-IUL. I hold a PhD in African Studies granted by ISCTE-IUL in the year 2016 for a research conducted in Senegal. My initial formation is in Social and Cultural Anthropology, for which I obtained my License in 2005. I have worked as a volunteer with senegalese NGO ASREAD and, since 2007, I've been researching on Senegal. In 2008/2009 I've directed an independent research documentary entitled Waalo Waalo on the rural socio-geographical dynamics around the access to spring water in northern Senegal, where I would also be between 2011 and 2013, conducting fieldwork for my PhD. My research has focused in development, resource management, access to land, social history, migration, ICTs, youth, gender, intergenerational relations, social values and representations, and gender-based violence, violence against women, female genital mutilation and human rights. At present I'm a project manager at CEI-IUL in an European consortium partnership led by Universidade Rey Juan Carlos in Madrid, focusing on dissemination of knowledge on FGM/C among future professionals, and I've begun research at post-doctoral level on sexual and reproductive rights in West Africa.

## Education

## PhD Degree

PhD in African Studies

## Country

Portugal

## Institution

ISCTE-IUL

## Year

2016

## Thesis Title

Appropriation of ICT in Senegal: youth sociability and social values in crisis

## Previous position

## Position

PhD Candidate / Research Assistant

## Institution

ISCTE-IUL / FCT

## Country

Portugal

## Title of the Workplan

The politization of intimacy: sexual and reproductive rights in West Africa, resistances and developments

## PhD STUDENT

CEI-IUL  
CENTRE FOR  
INTERNATIONAL STUDIES**David Silva Ferreira**

dsfaa11@iscte-iul.pt  
Portuguese

## Personal Information

**Research Interests**

Nuclear non-proliferation and disarmament, european integration, and U.S.-Russian relations in the post-cold war period

**Biographical note**

I am a student of the PhD program in Political Science at the Instituto Universitário de Lisboa (ISCTE-IUL), specializing in International Relations, and a research assistant for the Centre for International Studies (CEI-IUL), in the same institution. I hold a Bachelor's degree in Public Administration from the University of Minho, and a Master's degree in International Studies from ISCTE-IUL. My areas of interest are Nuclear Non-proliferation and Disarmament, European Integration, and U.S.-Russian relations in the post-Cold War period.

## PhD Degree-awarding Institution

**PhD Degree**

Political Science (specialization in International Relations)

**Host Institution**

CEI-IUL

**Title of the Workplan**

A post-Cold War U.S. Partnership with Russia? A Critical Discourse Analysis of Political Speeches on Nuclear Weapons.

**Advisors and Affiliations**

Luís Nuno Rodrigues, ISCTE-IUL

**University**

ISCTE - Instituto Universitário de Lisboa

**Country**

Portugal

## PhD STUDENT

CEI-IUL  
CENTRE FOR  
INTERNATIONAL STUDIES**Filomena Capela Correia Amaral**

filomena\_amaral@iscte-iul.pt  
Portuguese

## Personal Information

**Research Interests**

Conceptual History; social and political dimensions of concepts; local communities and indigenous peoples perceptions on international sustainable management frameworks; human rights and in particular indigenous peoples rights; indigenous knowledge.

**Biographical note**

I have a license in Modern Languages and Literatures – Portuguese and French Studies (1997) and in Education (1999) both from FLUL. I have a Masters of Science in African Studies (2016 – ISCTE-IUL) and in Environmental citizenship and participation (2017 – UAB). I am an expert in Sustainable Forest Management. I was a teacher in Portugal and in Kinshasa (DRC), where I have lived for 14 years and worked as a sustainable management coordinator in the forest sector. I am a research assistant in the Centre for International Studies – ISCTE-IUL and I'm currently working on my PHD thesis in African Studies.

## PhD Degree-awarding Institution

**PhD Degree**

African Studies

**Host Institution**

CEI-IUL

**Title of the Workplan**

The concept of property in the congolese forest sustainable management framework.

**Advisors and Affiliations**

Ana Lúcia Sá, ISCTE-IUL and Theodore Trefon, Belgian Royal Museum for Central Africa

**University**

ISCTE - Instituto Universitário de Lisboa

**Country**

Portugal

## PhD STUDENT

CEI-IUL  
CENTRE FOR  
INTERNATIONAL STUDIES

**Magdalena Bialoborska**

magdalena\_bialoborska@iscte-iul.pt  
Polish

**Personal Information****Research Interests**

Music in West Africa, artists and artisans, cultural politics; informal economy, organizing processes in informal economy

**Biographical note**

I am a PhD Candidate in African Studies, MA in African Studies (ISCTE-IUL), B.A. Studies in Ethnology and Anthropology of Culture (University of Warsaw), graduated from the Conservatory of Music in Torun (transvers flute and piano). I've participated in the research project: "Organizations and Representation in the Informal Economy in PALOP (The Portuguese-speaking African countries): experiences and perspectives" (REF: PTDC/AFR/113992/2009). Field work experience: Cape Verde, São Tomé e Príncipe and Guinea-Bissau. Currently my research is focused on the music of West Africa, especially on the transformations in the traditional music of São Tomé e Príncipe and the current music scene and music production on the archipelago and of the diaspora. I also work on the organizing processes of informal workers and informal transports, especially in São Tomé e Príncipe and Guinea-Bissau. I'm also a cultural producer with long experience in this area.

**PhD Degree-awarding Institution****PhD Degree**

African Studies

**University**

ISCTE - Instituto Universitário de Lisboa

**Host Institution**

CEI-IUL

**Country**

Portugal

**Title of the Workplan**

Dexa puíta sóc(m)apé. Transformações da música tradicional em São Tomé e Príncipe

**Advisors and Affiliations**

Augusto Manuel Saraiva do Nascimento Diniz, ISCTE-IUL and Josep Martí Perez, Institució Milà i Fontanals (CSIC)

## PhD STUDENT

CEI-IUL  
CENTRE FOR  
INTERNATIONAL STUDIES

**Mónica Canário**

ana\_monica\_canario@iscte-iul.pt  
Portuguese

**Personal Information****Research Interests**

Middle East and North Africa studies, EU policies, women's rights, feminism, human rights, civil rights movements, civil society organizations, refugees and migrations

**Biographical note**

I was born in Deiras in 1993. I had my graduation in Political Science from ISCTE-IUL (2014) and completed a Master's Degree in International Studies (Middle East and North Africa specialization) in the same institution, with a dissertation about "The Impact of the Arab Spring on the social and political status of women in Tunisia" (2016). I also had a specialization in Refugees, Human Rights and Reception: National and International Perspectives completed in September 2016. I have been part of the HeForShe central team in Portugal since December 2016, a movement created by UN Women in 2014, with the purpose of accelerating gender equality around the world and to raise awareness among boys and men for the importance of joining the debate. Currently, I'm attending a PhD in Political Science (International Relations specialization) at ISCTE-IUL, where I'm developing my thesis project, entitled "The EU soft power as a tool for gender empowerment in the European Neighbourhood Policy? The case of Morocco and Tunisia", under Professor Luís Nuno Rodrigues (ISCTE-IUL, CEI-IUL) and Professor Giulia Daniele (CEI-IUL) coordination.

**PhD Degree-awarding Institution****PhD Degree**

Political Science

**University**

ISCTE - Instituto Universitário de Lisboa

**Host Institution**

CEI-IUL

**Country**

Portugal

**Title of the Workplan**

The EU soft power as a tool for gender empowerment in the European Neighbourhood Policy: The case of Morocco and Tunisia

**Advisors and Affiliations**

Luís Nuno Valdez Faria Rodrigues, ISCTE-IUL and Giulia Daniele, CEI-IUL

2.3

RESEARCH UNITS

CIES-IUL

WELCOME TO

CIES-IUL

CENTRE FOR RESEARCH  
AND STUDIES IN SOCIOLOGY**João Sebastião**

Director of CIES-IUL

**Dear Researchers,****It is a great pleasure to welcome you to CIES-IUL.**

We hope to fulfill your expectations and provide you with a stimulating and participatory scientific framework in an international environment to allow a successful implementation of your project. The choice of the CIES-IUL gives the opportunity to communicate and share ideas with academic staff from different countries and to explore the support of our scientific infrastructure and the wider resources of ISCTE-IUL.

As you know CIES-IUL's main scientific field is sociology, but we also have strong scientific expertise and research in the fields of public policy, political science, education, communication, urban studies, social work and history. On this multidisciplinary basis, we study processes of social and institutional change at the national and global levels, from a comparative, quantitative and qualitative perspective. At the same time, we pay special attention to the ways in which these changes are associated, as causes and effects, with public policies. We count on your initiative to expand and enrich the collective work and to build together new opportunities and we hope this is the starting point of a longstanding collaboration with our Centre.

**You are very welcome!**



## RESEARCH FELLOWS

## CIES-IUL

## CENTRE FOR RESEARCH AND STUDIES IN SOCIOLOGY

**Alejandro Goldberg**

alejandro.goldberg@gmail.com

Italian

## Personal Information

**Research Interests**

Social and medical anthropology; public health, migrations and refugees.

**Biographical note**

I'm an Anthropologist of the Buenos Aires University (Argentina). I have a Master and a Ph.D. in Medical Anthropology from the Rovira and Virgili University of Tarragona-Spain (2004). The title of my research was: «"TO BE AN INMIGRANT IS NOT AN ILLNESS". Immigration, life and working conditions in Spain. The health/illness/care process of Senegal migrants in Barcelona». Since then, my working field has been social and medical anthropology; public health, migrations and refugees. At the moment, I am a Postdoctoral Researcher at the CIES-IUL in the project: "REFUGIUM: building shelter cities and a new welcoming culture. Links between European universities and schools in Human Rights" (Agreement Number – 2016-1-ES01-KA203-025000), ERASMUS + & SEPIE.

## Education

**PhD Degree**

Medical Anthropology

**Country**

Tarragona-Spain

**Institution**

Rovira and Virgili University

**Year**

2004

**Thesis Title**

"TO BE AN INMIGRANT IS NOT AN ILLNESS". Immigration, life and working conditions in Spain. The health/illness/care process of Senegal migrants in Barcelona

## Previous position

**Position**

Postdoctoral Fellowship (Pnpd-Capes)

**Institution**

Catholic University of Santos.

Programa de Pós-Graduação em Saúde Coletiva.

**Country**

Brazil

**Title of the Workplan**

"REFUGIUM: building shelter cities and a new welcoming culture. Links between European universities and schools in Human Rights"

## RESEARCH FELLOWS

## CIES-IUL

## CENTRE FOR RESEARCH AND STUDIES IN SOCIOLOGY

**Patrícia Calca**

patriciacalca@gmail.com

Portuguese

## Personal Information

**Research Interests**

Political institutions; comparative politics and comparative political economy; European Union; legislative behaviour and decision-making (governments, parliaments and parties); public policy analysis; political accountability/responsiveness and corruption.

**Biographical note**

I am a political scientist (Ph.D.), a post-doctoral fellow funded by the FCT (CIES-IUL/ University of Mannheim) and a visiting fellow at the University of Konstanz. During 2015-2016, I was a post-doctoral fellow at the Technical University of Kaiserslautern. Between 2013 and 2015, I worked at the University of Mannheim as a research associate and teaching assistant. Previously (2009-2013), I was an instructor at Universidade Aberta and a research assistant at the CIES-IUL of the Instituto Universitário de Lisboa and at the University of Évora (CISA-AS). I was a research visiting scholar at the New York University (US), at the University of Mannheim (Germany) and the University of Barcelona (Spain). Currently I am also an associate researcher at the Institute of Contemporary History – Universidade Nova de Lisboa. I received my Doctorate degree in Political Science (Comparative Politics) from the University of Lisbon – Institute of Social Sciences in 2015. I also hold a Master's Degree and a University Degree (Licenciatura), both pre-Bologna, in Political Science from the Technical University of Lisbon – ISCSP. My work is published, among others, in Parliamentary Affairs, Crime, Law and Social Change, Rowman & Littlefield – Lexington Books, Nação e Defesa, Bertrand.

## Education

**PhD Degree**

Political Science

**Country**

Portugal

**Institution**

Instituto de Ciências Sociais - Universidade de Lisboa

**Year**

2015

**Thesis Title**

Government's Decision: A Theoretical and Empirical Study on Legislative Initiative as Strategic Behaviour

## Previous position

**Position**

Post-Doctoral Fellow

**Institution**

University of Kaiserslautern

**Country**

Germany

**Title of the Workplan**

Governments Responsiveness in Europe: Consolidation, Crisis and Legislative Behaviour

## RESEARCH FELLOWS

## CIES-IUL

## CENTRE FOR RESEARCH AND STUDIES IN SOCIOLOGY

**Simone Castellani**

simone.castellani@iscte-iul.pt

Italian

## Personal Information

**Research Interests**

International migration, Latino american migration, migrants' children, EU mobility, transnational health care.

**Biographical note**

My name is Simone Castellani. I hold a PhD in Social Anthropology (University of Seville, Spain) and in Migration and Intercultural Processes (University of Genoa, Italy). I have been visiting fellow in several research centers in Spain, UK, Italy, Ecuador, U.S and Germany. My topics of research are related to the international migratory processes. Specifically, I have studied the Latino American migration flows towards Europe, paying particular attention to the so-called second generation, and the new Southern European migration flows towards Germany during the contemporary economic crisis. During the last years I have had the opportunity to develop some research on the topic of the transnational social protection, collaborating within an international team integrated by scholars of different American and EU's countries within the Global Social Protection project, which investigate the access to the health care of Ecuadorian migrants. Currently I am a postdoctoral researcher at the CIES-IUL where I integrate the UPWEB project team (European program NORFACE) coordinated by Prof. Beatriz Padilla, which focuses on the practices of welfare bricolage in contexts with high super-diversity.

## Education

**PhD Degree**

Social Anthropology

**Country**

Spain

**Institution**

Seville

**Year**

2014

**Thesis Title**

The children of the Others. Identity reproduction of the descendants of Ecuadorians in the cities of Seville and Genoa

## Previous position

**Position**

Postdoctoral researcher

**Institution**

Centro Studi Medi

**Country**

Italy

**Title of the Workplan**

Understanding the practice and developing the concept of welfare bricolage

PhD STUDENT

**CIES-IUL**  
CENTRE FOR RESEARCH  
AND STUDIES IN SOCIOLOGY



**Andreia Fidalgo**  
andrea\_fidalgo@iscte-iul.pt  
Portuguese

#### Personal Information

##### Research Interests

Early modern history; social and economic history.

##### Biographical note

I have a degree in Cultural Heritage (UAlg, 2009) and a Master degree in History (UAlg, 2013). At present, I am a PhD student in the Inter-University Doctoral Programme in History - Change and Continuity in a Global World, with a scholarship from Fundação para a Ciência e a Tecnologia (FCT). I am currently developing a PhD dissertation entitled "The Restoration Plan of the Kingdom of Algarve: economic reform between 1773 and 1820". My research focuses on the impact and social reception of the enlightened reformist plans designed to solve the economic backwardness and the oppressive situation of peasants, agricultural laborers, fishermen and common people of the Portuguese southern province of Algarve.

#### PhD Degree-awarding Institution

##### PhD Degree

PIUDHIST - Inter-University Doctoral Programme in History (FCT PhD Programme)

##### University

ISCTE - Instituto Universitário de Lisboa

##### Host Institution

CIES-IUL

##### Country

Portugal

##### Title of the Workplan

The Restoration Plan of the Kingdom of Algarve: economic reform between 1773 and 1820

##### Advisors and Affiliations

José Vicente Serrão, ISCTE-IUL

PhD STUDENT

**CIES-IUL**  
CENTRE FOR RESEARCH  
AND STUDIES IN SOCIOLOGY



**Catarina Rebelo**  
ana\_catarina\_rebelo@iscte-iul.pt  
Portuguese

#### Personal Information

##### Research Interests

Technology and society; digital exclusion; elderly and technology.

##### Biographical note

I am a PhD student in the inter-university Doctoral Program in Communication Studies: Technology, Culture and Society. I am graduated in Communication Sciences by Minho University and I hold a Master degree in Communication, Culture and Information Technologies by ISCTE-IUL. My research is about senior citizens and the Internet. As the elderly are a growing group of Internet adopters, I am interested to understand the trajectories of Internet uptake of Portuguese senior citizens.

#### PhD Degree-awarding Institution

##### PhD Degree

Communication Studies: Technology, Culture and Society (FCT PhD Programme)

##### University

ISCTE - Instituto Universitário de Lisboa

##### Host Institution

CIES-IUL

##### Country

Portugal

##### Title of the Workplan

Trajectories of Internet adoption by the elderly

##### Advisors and Affiliations

Rita Espanha, ISCTE-IUL

PhD STUDENT

CIES-IUL  
CENTRE FOR RESEARCH  
AND STUDIES IN SOCIOLOGY

**Fábio Faria**

fabio\_faria@iscte-iul.pt  
Portuguese

#### Personal Information

##### Research Interests

Contemporary history, social history, international relations, migrations.

##### Biographical note

I have a degree in Modern and Contemporary History (ISCTE - Instituto Universitário de Lisboa, 2013) and a master in Modern and Contemporary History, on which I have defended the thesis «International Circulations and Liberalism. The Portuguese Liberal Exile, 1828-1832» (ISCTE-IUL, 2015). I was research fellow on the research project «Social Control and Criminal Policy in Portuguese Liberalism, 1820-1867» (2014-2015). I have published an article entitled «The Portuguese Liberal Exile of 1828-1932, a multidimensional phenomenon: cultural and social practices» in Revista de História da Sociedade e da Cultura (2016). My PhD thesis is about refugees in Portugal between 1933 and 1945, studying the portuguese repression regarding the refugees from Spanish Civil War (1936-1939) and World War II (1939-1945).

#### PhD Degree-awarding Institution

##### PhD Degree

History

##### University

ISCTE - Instituto Universitário de Lisboa

##### Host Institution

CIES-IUL

##### Country

Portugal

##### Title of the Workplan

Estado Novo and Repression. Movement and Control of Refugees in Portugal, 1933-1945

##### Advisors and Affiliations

Maria João Vaz, ISCTE-IUL

PhD STUDENT

CIES-IUL  
CENTRE FOR RESEARCH  
AND STUDIES IN SOCIOLOGY

**João Manuel Rocha**

gjoaorocha@gmail.com  
Portuguese

#### Personal Information

##### Research Interests

Journalism, sociology of journalism, history of the media, media and democracy, colonialism, post-colonialism, contemporary history.

##### Biographical note

I have a degree in Communication (FCSH-UNL, 1992) and a master in Communication, Culture and Information Technologies, on which I have defended the thesis «A causa timorense, uma causa dos jornais Diário de Notícias e Público no pós-referendo de 1999 em Timor» (ISCTE-IUL, 2009). The outcome of my thesis was adapted for publication in book. I've been journalist for more than 30 years, including almost 27 years in the newspaper Público, since its foundation until 2016. Simultaneously, from 2000 to 2012, I was a professor at Universidade Autónoma de Lisboa and in 2014 I taught at Instituto das Novas Profissões. Since 2015 I've been a guest teacher at Escola Superior de Comunicação Social, in Lisbon, where I'm also involved in research projects. Moreover, I'm a collaborator of CEAs (Center for African and Latin American Studies), a research centre at the University of Lisbon. With a FCT's scholarship, in my PhD I'm studying journalistic narratives of the beginning of colonial portuguese war in Angola, in 1961.

#### PhD Degree-awarding Institution

##### PhD Degree

Communication Sciences

##### University

ISCTE - Instituto Universitário de Lisboa

##### Host Institution

CIES-IUL

##### Country

Portugal

##### Title of the Workplan

Journalistic narratives of the colonial war and the search for legitimation of the authoritarian regime

##### Advisors and Affiliations

José Rebelo, ISCTE-IUL

PhD STUDENT

**CIES-IUL**  
CENTRE FOR RESEARCH  
AND STUDIES IN SOCIOLOGY

**Manuel Garcia-Ruiz**

manuel\_ruiz@iscte-iul.pt

Spanish

**Personal Information****Research Interests**

Light festivals, sense of place, sense of belonging, social network analysis, urban visual methods, urban and arts sociology.

**Biographical note**

I hold a double degree in Communication Sciences from the University of Alicante (Spain) and the Université Paris Dauphine (France, 2010) and a Master Degree in Culture and Communication Sciences from the University of Lisbon (2014). Currently, I am a PhD researcher studying the potential of light festivals as tools for the development of Portuguese secondary cities (medium and small) through the creation of a highly competitive, specialized and planned creative tourism. My interdisciplinary work pays special attention to concepts such as sense of place and sense of belonging and I am very interested in the professional career building of light-artists. Artisticwise, I have been involved in different international events as curator, tutor and artist; what leads me to collaborate with Spectrum Project (European Light Festival Network) as an advisor - under the financing aid of the European Commission.

**PhD Degree-awarding Institution****PhD Degree**

Sociology

**University**

ISCTE - Instituto Universitário de Lisboa

**Host Institution**

CIES-IUL

**Country**

Portugal

**Title of the Workplan**

Light as agent for urban public space transformation. Analysing Lights Festivals in Portugal

**Advisors and Affiliations**

Lígia Sofia Alves Passos Ferro, ISCTE-IUL and IS-UP and Mário Jorge da Câmara de Melo Caeiro, ESAD.CR/IPL

PhD STUDENT

**CIES-IUL**  
CENTRE FOR RESEARCH  
AND STUDIES IN SOCIOLOGY

**Paulo José Farias Rodrigues**

2paulofr@gmail.com

Portuguese

**Personal Information****Research Interests**

Leadership; organizational communication.

**Biographical note**

During my professional experience of 30 years I've performed the following roles: Project Director / Consultant, General-Manager, Sales Director, Marketing Director, Business Unit Manager, Product Manager, Training Manager, Sales Representative. I have 20 years of experience working in the Pharmaceutical Industry and I've been involved in training, facilitation and consulting for ten years. More recently I extended my experience as a university teacher of strategy on master course of Marketing and Advertising and post-graduation Course of Sales Management. As scientific background I have a Master on Strategic Communication and a degree on Marketing, Advertising and Public Relations.

**PhD Degree-awarding Institution****PhD Degree**

Communication Sciences

**University**

ISCTE - Instituto Universitário de Lisboa

**Host Institution**

CIES-IUL

**Country**

Portugal

**Title of the Workplan**

The role of non-verbal communication on leadership

**Advisors and Affiliations**

Sandra Miranda, ISCTE-IUL and ESCS-IPL

## PhD STUDENT

**CIES-IUL**  
CENTRE FOR RESEARCH  
AND STUDIES IN SOCIOLOGY



**Paulo Martins**  
pnsms@iscte-iul.pt  
Portuguese

## Personal Information

## Research Interests

Mediatization; reflexivity; identities; algorithms; media reflections.

## Biographical note

I am a PhD student in Communication Studies at CIES-IUL in Portugal, with an academic background in Sociology. Before, I worked in television hard news for about 20 years, in Portugal. My research interest revolve around the effects of Media Reflections on the processes of reflexivity undertaken by individuals in the development of their algorithmical selves, under mediatization and mediatized realities.

## PhD Degree-awarding Institution

## PhD Degree

Communication Studies: Technology, Culture and Society (FCT PhD Programme)

## Host Institution

CIES-IUL

## Title of the Workplan

Media Reflections: searching for the individual's algorithmical identities under Mediatized Realities

## Advisors and Affiliations

Gustavo Cardoso, ISCTE-IUL and Cláudia Alvarez ISCTE-IUL and Universidade Lusófona

## PhD STUDENT

**CIES-IUL**  
CENTRE FOR RESEARCH  
AND STUDIES IN SOCIOLOGY



**Ricardo Bento**  
ricardo.bento7@gmail.com  
Portuguese

## Personal Information

## Research Interests

Urban sociology and urban anthropology, art philosophy, ethics, social inequalities and social change.

## Biographical note

Under the PhD Program in Urban Studies from the Instituto Universitário de Lisboa (ISCTE-IUL) and the Universidade Nova de Lisboa (FCSH-UNL), I've been elaborating a thesis with the title: "Rhythms of the city: the networks of an orchestra in the metropolitan space of Lisbon", promoted by a doctoral fellowship from FCT - Foundation for Science and Technology. I'm a researcher assistant at CIES-IUL and also develop my research work in the project "Changing cities: participation processes in Portugal and Brazil", coordinated by Graça Índias Cordeiro (ISCTE-IUL / CIES-IUL) and Renata Sá Gonçalves (UFF), where we follow processes of social recomposition and cultural reconfiguration. During 2014/2015, I worked as research fellow in the project "The work of art and art at work: creative circuits for training and labor integration of immigrants in Portugal", coordinated by Lúcia Ferro (ISCTE-IUL / CIES-IUL) and Otávio Raposo (ISCTE-IUL / CIES-IUL). I've a master degree in Sociology (ISCTE-IUL) and a graduate degree in Philosophy (FCSH-UNL). I have published several book chapters, both in national and international editions and articles in indexed journals with scientific review.

## PhD Degree-awarding Institution

## PhD Degree

Urban Studies

## Host Institution

CIES-IUL

## Title of the Workplan

Rhythms of the city: the networks of an orchestra in the metropolitan space of Lisbon

## Advisors and Affiliations

Graça Índias Cordeiro, ISCTE-IUL

PhD STUDENT

**CIES-IUL**  
CENTRE FOR RESEARCH  
AND STUDIES IN SOCIOLOGY



**Rita Monteiro Mourão**

rita\_andreia\_mourao@iscte-iul.pt

Portuguese

### Personal Information

#### Research Interests

Organizational communication; performance appraisal; 360-degree feedback; leadership.

#### Biographical note

I am a PhD student of Communication Sciences, PhD in Communication Studies: Technology, Culture and Society, in Portugal. I have a PhD Scholarship funded by the Foundation for Science and Technology (FCT). I had a Master's Degree in Social and Organizational Psychology from ISCTE-IUL (Instituto Universitário de Lisboa) and a Psychology Degree from the same Institution. I've been a lecturer at ISCTE-IUL between 2012 and 2015, having taught curricular units like: "Communication Techniques"; "Teamwork"; "Problem Solving and Decision Making" and "Conflict Management". I work in the field of Organizational Communication and Performance Evaluation. I have written three articles published in international journals with scientific arbitration, two articles published in national journals with scientific arbitration and more than 15 communications in national and international conferences.

### PhD Degree-awarding Institution

#### PhD Degree

Communication Studies: Technology, Culture and Society (FCT PhD Programme)

#### University

ISCTE - Instituto Universitário de Lisboa

#### Host Institution

CIES-IUL

#### Country

Portugal

#### Title of the Workplan

The supervisor's communication when 360-degree evaluation is applying

#### Advisors and Affiliations

Sandra Miranda, ISCTE-IUL, ESCS-IPL and Gisela Gonçalves, UBI

2.4

RESEARCH UNITS

CIS-IUL

WELCOME TO

CIS-IUL

CENTRE FOR PSYCHOLOGICAL  
RESEARCH AND SOCIAL INTERVENTION**Carla Moleiro**

Director of CIS-IUL

**Dear Researchers,****CIS-IUL offers a great diversity of lines of research in Psychology and a stimulating and warm scientific environment in social sciences and humanities.**

A well-equipped psychology laboratory and a very active psychology department with a number of graduate and post graduate courses further contribute to offer the best conditions for training and research. The training of young researchers is of great importance to us and we offer you support to develop your own autonomous research path and career. We also count on you to contribute to the excellence of research that is done in CIS-IUL and to engage in international and interdisciplinary networks that improve the visibility of our research centre. CIS-IUL is always glad to welcome new researchers who come to share their scientific competence and drive to open new frontiers of knowledge thus helping us to fulfil our mission of developing research in psychology and contributing to find solutions for psychological social problems.

We wish all the best for your period of training at ISCTE-IUL and hope you will feel at home.



## RESEARCH FELLOWS

CIS-IUL

CENTRE FOR PSYCHOLOGICAL RESEARCH  
AND SOCIAL INTERVENTION**Oleksandr Horchak**

ohorchak@gmail.com

Ukrainian

## Personal Information

**Research Interests**

Embodied cognition, language processing, social cognition, metaphor theory, abstract concepts.

**Biographical note**

My name is Oleksandr Horchak. My degree in psychology from University of Algarve in 2013 has generated two lines of research. The first one investigates the embodiment of cognition with a focus on language. The second line also concerns the embodied basis of cognition, but is contextualized with more social bite and is concerned with how embodied simulation processes influence how people interpret themselves and others. So at the broadest level, I am interested in how such grounding mechanisms as the body, action, modality-specific systems, and environments (physical and social) affect the processing of concepts. This work appeared in a few journals including *Frontiers in Psychology*, *Metaphor & Symbol*, and *Cognitive Systems Research*. Recently, I received a Postdoctoral Fellowship from the Fundação para a Ciência e a Tecnologia (FCT). During this Fellowship I will continue working in the area of embodiment, but this time will shift my focus to real-time simulation processes in language comprehension using eye-tracking. More precisely, I will investigate how visual context and different types of languages influence the dynamic simulation of speed.

## Education

**PhD Degree**

Psychology

**Country**

Portugal

**Institution**

University of Algarve

**Year**

2013

**Thesis Title**

An Embodied Approach to Language: The Role of Bodily Feedback in Discourse Processing

## Previous position

**Position**

Ph.D. student

**Institution**

University of Algarve

**Country**

Portugal

**Title of the Workplan**

The influence of the visual context and different types of languages on dynamic simulation of speed

## RESEARCH FELLOWS

CIS-IUL

CENTRE FOR PSYCHOLOGICAL RESEARCH  
AND SOCIAL INTERVENTION**Maksim Rudnev**

maksim.rudnev@iscte-iul.pt

Russian

## Personal Information

## Research Interests

Basic human values, moral attitudes, ageism.

## Biographical note

I am a researcher and teacher at Higher School of Economics in Moscow, Russia. Since I've defended my PhD thesis on the topic 'Basic values of Russians as compared to the other Europeans', I'm interested in large-scale studies of basic values and related concepts. My recent papers suggest a personcentered approach to the study of values which refuses validity of country means and celebrates fundamental heterogeneity of every society. Recently, I've been involved in an international research network 'Boundaries of life'. It focused on moral attitudes toward beginning (abortion, IVF, etc.) and end of life (assisted dying, euthanasia, etc.) issues. As part of this project, a survey was conducted in Germany and Russia, and a new instrument measuring attitudes toward assisted dying has been developed. Now I work as a CIS-IUL postdoc researcher with Melanie Vaclair in the research project 'Brave Old World? The role of age diversity in ageism'.

## Education

## PhD Degree

Sociology

## Country

Russia

## Institution

Institute of Sociology Russian Academy of Sciences

## Year

2009

## Thesis Title

Basic Human Values of Russians as compared to the Other Europeans

## Previous position

## Position

Senior Research Fellow

## Institution

National Research University Higher School of Economics

## Country

Russia

## Title of the Workplan

Brave Old World? The role of age diversity in ageism

## PhD STUDENT

CIS-IUL

CENTRE FOR PSYCHOLOGICAL RESEARCH  
AND SOCIAL INTERVENTION**Andrea Maria Flores Oliveira Fontes**

fontes.andrea@gmail.com

Portuguese

## Personal Information

## Research Interests

Human Resources; people development; motivation; leadership; coaching; wellbeing at work.

## Biographical note

Master in Psychology of Counseling and Psychotherapies by the University Lusófona and licensed in Psychology by the same University. Additionally, graduated in Business Management by ISCTE-IUL and graduated in Coaching, Leadership and Personal Excellence by the International School of Professional Coaching. Co-author of a book within the Psychology Area. Within the last twenty years directed several departments in multinational companies (Duracell, Gillette Group, Procter & Gamble and L'Oréal), namely Human Resources, Business Development, Commercial, Marketing, Trade Marketing and Categories Management. Most recently worked as a performance & career coach and trainer with more than 400 hours teaching in the areas of Human Resources, Leadership, Career management and positioning in the job market. Actual Research focus in People Development, Coaching, Motivation, Wellbeing at Work themes, with current PhD project in Organizational Psychology, particularly in Coaching within an Organizational Environment.

## PhD Degree-awarding Institution

## PhD Degree

Psychology

## University

ISCTE - Instituto Universitário de Lisboa

## Host Institution

CIS-IUL

## Country

Portugal

## Title of the Workplan

The effects of coaching when provided to lower hierarchical levels in organizational context – analyzing online and face to face approaches

## Advisors and Affiliations

Silvia dello Russo, ISCTE-IUL

## PhD STUDENT

CIS-IUL

CENTRE FOR PSYCHOLOGICAL RESEARCH  
AND SOCIAL INTERVENTION**Bethânia Sasseron**

bmsne@iscte-iul.pt

Brazilian

## Personal Information

## Research Interests

Psychology, education, social science.

## Biographical note

Graduate in Psychology at the Pontifical Catholic University of Minas Gerais, Brazil, 2009. Master in Forensics Psychology and Social Exclusion at Lusófona University of Humanities and Technologies, Portugal, 2015. PhD Student in Psychology, ISCTE-IUL, Portugal, 2016 - in progress. Previous work related to Prevention and Intervention Programs in population at risk and vulnerability, considering the social context of violence, unemployment, drug addiction, mental illness, and extreme poverty, especially with families, women, children, and adolescents. The actual project proposes a reflexive research about relations and social support in the Special Education field. The aim of the research is to map and analyze the social networks of parents, teachers, and special education teachers of children between 6 and 12 years old with special needs, enrolled in public schools in the area of Lisbon. Applications of Social Network Analysis in Special Education can provide important insights, suggesting new perspectives for future interventions in this area, such as strengthen an existing social network.

## PhD Degree-awarding Institution

## PhD Degree

Psychology

## University

ISCTE - Instituto Universitário de Lisboa

## Host Institution

CIS-IUL

## Country

Portugal

## Title of the Workplan

Social networks of parents and teachers of children with disabilities

## Advisors and Affiliations

Cecília Aguiar, ISCTE-IUL

## PhD STUDENT

CIS-IUL

CENTRE FOR PSYCHOLOGICAL RESEARCH  
AND SOCIAL INTERVENTION**Carla Branco**

carla\_branco@iscte-iul.pt

Portuguese

## Personal Information

## Research Interests

My PhD project investigates the impact of social determinants on the physically disabled people's well-being and health, especially the mitigating role of personal assistance services on the negative effects of the environment. This includes studying the effects of both positive and negative intergroup contact on the well-being and health, as well as the effects of social identification with the minority group. I'm also interested in exploring the differences in the well-being and health between minority groups and in crossed category groups. The project include cross-country, longitudinal and experimental studies.

## Biographical note

I received the master degree in Social and Organizational Psychology from the Instituto Universitário de Lisboa (ISCTE-IUL) in 2014, with the award of the best finalist student of the course. I worked in ISCTE-IUL as research assistant in environmental psychology projects focused on the predictors of pro-environmental behaviours (e.g. social norms and place identity) and on the predictors of inclusion/exclusion of local communities in participatory processes (eg. Infra-humanization). I participate in a national society and in a European network related to disabled people issues and rights. Currently I am a PhD student of LiSP - Lisbon PhD in Social Psychology at the Instituto Universitário de Lisboa (ISCTE-IUL).

## PhD Degree-awarding Institution

## PhD Degree

Psychology

## University

ISCTE - Instituto Universitário de Lisboa

## Host Institution

CIS-IUL

## Country

Portugal

## Title of the Workplan

The Life of the Physically Disabled: The Socio-Psychological Determinants of Their Well-being and Health

## Advisors and Affiliations

Miguel Ramos, ISCTE-IUL, Oxford University and Miles Hewstone, Oxford University

## PhD STUDENT

CIS-IUL

CENTRE FOR PSYCHOLOGICAL RESEARCH  
AND SOCIAL INTERVENTION**Cristiane da Anunciação Souza**Cristiane\_Anunciacao\_Souza@iscte-iul.pt  
Brazilian

## Personal Information

**Research Interests**

Cognitive neuroscience; autism spectrum disorders, visual memory, declarative memories.

**Biographical note**

I am a first year PhD student in the Doctoral Program in Psychology at ISCTE-IUL, supervised by Doctor Margarida Vaz Garrido (CIS-IUL/ISCTE-IUL) and Doctor Joana C. Carmo (CIPUL/University of Lisbon). I've graduated in Psychology at 2008 and had a Master's Degree in Cognitive Science at the University of Lisbon. My main research interests include Cognitive Neurosciences and Developmental Disorders. I had 8 years of professional experience in Psychology. My main activities included neuropsychological assessment and interventions, teaching/training and coordination in higher-education, and scientific research. Currently, I hold a FCT-fellowship and I'm fully dedicated to my academic training and developing my research skills in view of a future research career. My current research interest is to explore the hippocampus functioning and its connectivity with neocortical areas during retrieval of declarative memories in individuals with ASD and Alzheimer's disease (for a comparison of memory profiles). This research interest has grown out during my master's experience, when I investigated contextual effect on visual short-memory in high functioning ASD supervised by Dr. Joana C. Carmo and collaborated with her team in other projects that dealt with semantic functioning and related processes in ASD.

## PhD Degree-awarding Institution

**PhD Degree**

Psychology

**University**

ISCTE - Instituto Universitário de Lisboa

**Host Institution**

CIS-IUL

**Country**

Portugal

**Title of the Workplan**

The typicality and schema-congruency effects in memory retrieval: Examining the role of the hippocampus in Autism Spectrum Disorder and Alzheimer's Disease.

**Advisors and Affiliations**

Margarida Vaz Garrido, ISCTE-IUL and Joana C. Carmo – CICPSI-Faculdade de Psicologia, Universidade de Lisboa

## PhD STUDENT

CIS-IUL

CENTRE FOR PSYCHOLOGICAL RESEARCH  
AND SOCIAL INTERVENTION**Inês Oliveira**iamoa@iscte-iul.pt  
Portuguese

## Personal Information

**Research Interests**

Chronic pain, mental health, body-mind processes.

**Biographical note**

I am a 1st year student in the Psychology doctoral program at CIS-IUL/ISCTE-IUL. I am a psychomotor therapist, graduated from Faculty of Human Kinetics, University of Lisbon, where I also finished my master in psychomotor rehabilitation. I work at a general hospital since 2005, in the psychiatry department and since 2013 I've been also collaborating with the chronic pain unit. My PhD project aims to contribute to the improvement of chronic pain patients' quality of life and to the reduction of associated comorbidities by studying the influence of the patient's relation with their own body (body image and interoceptive awareness) in the associated pain disability and respective comorbidities (anxiety/ depression). I am a member of the research groups Health for All (H4A) and Behaviour, Emotion and Cognition (BEC), of CIS-IUL/ISCTE-IUL.

## PhD Degree-awarding Institution

**PhD Degree**

Psychology

**University**

ISCTE - Instituto Universitário de Lisboa

**Host Institution**

CIS-IUL

**Country**

Portugal

**Title of the Workplan**

The (dis)illusion of a painful body: the relationship with the body, pain disability and comorbidities in chronic pain patients

**Advisors and Affiliations**

Sónia Bernardes, ISCTE-IUL and Margarida Garrido, ISCTE-IUL

PhD STUDENT

CIS-IUL

CENTRE FOR PSYCHOLOGICAL RESEARCH  
AND SOCIAL INTERVENTION**Inês Pereira Ratinho**

Ines\_Ratinho@iscte-iul.pt

Portuguese

**Personal Information****Research Interests**

Personality traits; emic and etic differences; acculturation processes; cultural and intercultural psychology.

**Biographical note**

I have concluded my Undergraduate and Master degree at ISCTE-IUL, in Psychology and Psychology of Intercultural Relations, respectively. I have also work as a researcher in projects related to gender questions and transexuals rights. At the moment I'm focused in studying emic and etic differences in Autonomy-Connectedness among natives and immigrants, exploring also the relations of the self to human societal values and acculturation processes.

**PhD Degree-awarding Institution****PhD Degree**

Psychology

**University**

ISCTE - Instituto Universitário de Lisboa

**Host Institution**

CIS-IUL

**Country**

Portugal

**Title of the Workplan**

Autonomy-Connectedness: An integrative approach to the study of personality, migration and acculturation, and the Functionalist Human Value Theory

**Advisors and Affiliations**

Carla Moleiro, ISCTE-IUL and Marrie Bekker, Tilburg University

PhD STUDENT

CIS-IUL

CENTRE FOR PSYCHOLOGICAL RESEARCH  
AND SOCIAL INTERVENTION**Isa Figueira**

isa\_figueira@iscte-iul.pt

Portuguese

**Personal Information****Research Interests**

Health psychology, social psychology, group processes, support groups, informal caregivers, people with dementia.

**Biographical note**

My name is Isa Figueira, I am a 1st year graduate student in the Psychology doctoral program at the CIS-IUL/ISCTE-IUL. I graduated from ISCTE-IUL in Social and Organizational Psychology in 2001, and I finished my master in Clinical Psychology in 2012. My PhD project focuses on group processes in support groups, with particular emphasis on informal caregivers of people with dementia. I am a member of the research group Health for All (H4A), of CIS-IUL/ISCTE-IUL. I research and do a practical job in Psychology. I like the idea: help people with emotional and mental health problems and use what I learn in psychology as a science.

**PhD Degree-awarding Institution****PhD Degree**

Psychology

**University**

ISCTE - Instituto Universitário de Lisboa

**Host Institution**

CIS-IUL

**Country**

Portugal

**Title of the Workplan**

From research to practice: Applying Social Psychology Group Processes Approach to improve health and well-being of Support Groups for informal caregivers

**Advisors and Affiliations**

Luísa Lima, ISCTE-IUL and María Palacín, University of Barcelona

## PhD STUDENT

CIS-IUL

CENTRE FOR PSYCHOLOGICAL RESEARCH  
AND SOCIAL INTERVENTION**João Mariano**joao\_mariano@iscte-iul.pt  
Portuguese

## Personal Information

**Research Interests**

Ageing, ageism, self-stereotyping.

**Biographical note**

I received my master's degree in Applied Social Cognition from the Faculty of Psychology of the University of Lisbon in 2013. I've worked as a research assistant at the Instituto Universitário de Lisboa (ISCTE-IUL) in several European projects in the ageing field, including OLA – Organization Life Assistant for future active ageing, which aimed to develop technological solutions to support older adults and their caregivers, and SiforAGE – Social Innovation for Active and Healthy Ageing, with the ultimate goal of promoting a society for all ages. I'm currently a PhD student at the Instituto Universitário de Lisboa (ISCTE-IUL) as part of LiSP – Lisbon PhD in Social Psychology and my research work focuses on how age self-stereotypes influence technology use by older adults.

## PhD Degree-awarding Institution

**PhD Degree**

Psychology

**University**

ISCTE - Instituto Universitário de Lisboa

**Host Institution**

CIS-IUL

**Country**

Portugal

**Title of the Workplan**

Too old for technology? The influence of age stereotypes on technology use by older adults for health promotion

**Advisors and Affiliations**

Sibila Marques, ISCTE-IUL, Hein de Vries, Maastricht University and Anton Dijker, Maastricht University

## PhD STUDENT

CIS-IUL

CENTRE FOR PSYCHOLOGICAL RESEARCH  
AND SOCIAL INTERVENTION**João Pedro Rodrigues Pizarro**jprpo@iscte-iul.pt  
Portuguese

## Personal Information

**Research Interests**

Multisensory integration, predictive coding, schizophrenia, social cognition.

**Biographical note**

I took a Neurophysiology graduation at Escola Superior de Saúde do Vale do Ave, Famalicão, acquiring practice in Electroencephalography, Electromyography and Evoked Potentials techniques at the clinical level. After that I took Mater Degree in Healthy Sciences at University of Minho, Braga, in the field of Neuroscience working with electrophysiological techniques (Local Field Potentials) in the context of Alzheimer's disease. Right now, I am a PhD student at LiSP PhD program of Lisbon and I am interested in understanding how the brain integrates multiple information coming from different sensory modalities in social contexts. Specifically, I am interested in understanding the neural underpinning of predictive coding. Furthermore, I am also interested in understanding alterations in these mechanisms in schizophrenia.

## PhD Degree-awarding Institution

**PhD Degree**

Psychology

**University**

ISCTE - Instituto Universitário de Lisboa

**Host Institution**

CIS-IUL

**Country**

Portugal

**Title of the Workplan**

The cognitive basis of emotion recognition and social cognition in health and in schizophrenic populations: A pharmaco-electrophysiological approach

**Advisors and Affiliations**

Rita Jerónimo, ISCTE-IUL and Diana Prata, Universidade de Lisboa

## PhD STUDENT

CIS-IUL

CENTRE FOR PSYCHOLOGICAL RESEARCH  
AND SOCIAL INTERVENTION**Mafalda Esteves**mafaldagayou@gmail.com; amglr@iscte-iul.pt  
Portuguese

## Personal Information

**Research Interests**

Gender, sexualities, citizenship, empowerment and community processes

**Biographical note**

Currently I'm a Research Manager in the project "INTIMATE — Citizenship, Care and Choice: The Micropolitics of Intimacy in Southern Europe" and a Ph.D. candidate in "Psychology" at CIS-IUL/ISCTE-IUL. I hold a degree in (Social) Psychology at the University of Coimbra (Portugal) since 2007 and in 2010 I have finished the Master degree in Psychosocial Intervention at University of Barcelona (Spain). I integrated the group of studies in Cultural, Community and Political Psychology (GEPCCIP-Barcelona) for (5 years), where I have worked as a researcher in Social Psychology. With this research group, I developed qualitative research and Participatory Action Research within the area of community action and empowerment. I'm also an activist in the feminist and the LGBT/queer movement and often I apply the Theatre of the Oppressed as method of work on these topics. Overall and more recently my areas of interest are gender and sexualities, intimate citizenship, well-being and collective action. My research project focus specifically on non-normative sexualities, namely bisexuality and the way self-identified bisexual's challenges the notion of intimate citizenship. Based on a critical approach, I want to explore the challenges that non-monosexual identities can bring to sexualities studies. On the other hand, I'm interested in understanding how social representations and stereotypes about bisexuality affect the well-being of bisexual people.

## PhD Degree-awarding Institution

**PhD Degree**

Psychology

**University**

ISCTE - Instituto Universitário de Lisboa

**Host Institution**

CIS-IUL

**Country**

Portugal

**Title of the Workplan**

Invisible sexualities: Intimate citizenship and psychosocial well-being in bisexuality.

**Advisors and Affiliations**

Carla Moleiro, ISCTE-IUL and Ana Cristina Santos, CES/UC

## PhD STUDENT

CIS-IUL

CENTRE FOR PSYCHOLOGICAL RESEARCH  
AND SOCIAL INTERVENTION**Margarida Carmona e Lima**margacarmona@gmail.com  
Portuguese

## Personal Information

**Research Interests**

Minority intergroup relations

**Biographical note**

Graduate in Psychology from University of Aveiro (Portugal, 2006-2009) and MSc in Social and Organizational Psychology from ISCTE-IUL (Portugal, 2009-2011). Research assistant experience (2011-2017) in social and educational areas. Currently, doing the PhD in Psychology at ISCTE-IUL - "From inclusive identities to inclusive societies: Global human identification, intergroup empathy and prosocial mobilization on immigrants integration".

## PhD Degree-awarding Institution

**PhD Degree**

Psychology

**University**

ISCTE - Instituto Universitário de Lisboa

**Host Institution**

CIS-IUL

**Country**

Portugal

**Title of the Workplan**

From inclusive identities to inclusive societies: Global human identification, intergroup empathy and prosocial mobilization on immigrants integration

**Advisors and Affiliations**

Rita Guerra, ISCTE-IUL

## PhD STUDENT

CIS-IUL

CENTRE FOR PSYCHOLOGICAL RESEARCH  
AND SOCIAL INTERVENTION**Maria da Luz Cabral**

maria.luz26@gmail.com

Portuguese

## Personal Information

## Research Interests

Social and organizational psychology; science in education, community intervention.

## Biographical note

I am a PhD Student at the Doctoral Programme in Social and Organizational Psychology of ISCTE - Instituto Universitário de Lisboa with the thesis project "Social policy design Psychological determinants of non take up in the era of digital and virtual governance". I have a Master of Science in Education, Community Intervention domain, thesis "Aging: Perspectives, Representations and Intergenerational Solidarity" at the Faculty of Psychology and Educational Sciences of the University of Porto (FPCE-UP) and a Postgraduation in Psychology at the Instituto CRIAP- Advanced Psychology.

## PhD Degree-awarding Institution

## PhD Degree

Psychology

## University

ISCTE - Instituto Universitário de Lisboa

## Host Institution

CIS-IUL

## Country

Portugal

## Title of the Workplan

Social policy design Psychological determinants of non take up in the era of digital and virtual governance

## Advisors and Affiliations

Rita Jerónimo, ISCTE-IUL and Manuela Calheiros, ISCTE-IUL

## PhD STUDENT

CIS-IUL

CENTRE FOR PSYCHOLOGICAL RESEARCH  
AND SOCIAL INTERVENTION**Sofia Petisca**

sofia\_petisca@iscte-iul.pt

Portuguese

## Personal Information

## Research Interests

Social robots; morality; dishonest behaviour

## Biographical note

I took my Bachelor degree in Psychological Sciences at ISPA (2006-2009) and a Master in Psychology of Emotions at ISCTE-IUL (2011-2013) with a thesis in the area of food behaviour, exploring how people's worries about food can be influenced by a survival context. Since 2014 I have been working in the field of Human-Robot interactions at GAIPS & INESC-ID, being part of the EU FP7 EMOTE project, where an empathic robotic prototype was developed in order to be included in schools. Currently, I am a PhD student at ISCTE-IUL working in Psychology applied to Human-Robot Interaction. My PhD focus on Morality in human-robot interactions, with the aim to understand how can we better equip our social robots to promote more honest behaviours from people.

## PhD Degree-awarding Institution

## PhD Degree

Psychology

## University

ISCTE - Instituto Universitário de Lisboa

## Host Institution

CIS-IUL

## Country

Portugal

## Title of the Workplan

Using social robots to encourage honest behaviours

## Advisors and Affiliations

Francisco Esteves, ISCTE-IUL, Mid-Sweden University and Ana Paiva, Instituto Superior Técnico &amp; INESC-ID



PhD STUDENT

CIS-IUL

CENTRE FOR PSYCHOLOGICAL RESEARCH  
AND SOCIAL INTERVENTION**Tânia R. Santos**

tania.rita.santos@iscte-iul.pt

Portuguese

**Personal Information****Research Interests**

Social inclusion, immigration, identity, social representations and acculturation, community intervention, international relations, political psychology, citizenship, China.

**Biographical note**

During my Masters in Systemic and Community Psychology in the University of Lisbon I had the opportunity to endorse in research opportunities/interventions in Brazil, Portugal and Poland. These were redefining experiences that contributed to a more culture-sensitive understanding of Psychology as a field of study and practice. The 'fruits of labour' were epitomized in a first attempt to explore the Chinese community in my master thesis - and to accept the challenge of living in China for two years. After other research experiences on inter-group relations and social change, I now work on citizenship representations by the Chinese in Portugal, for a more integrated perspective of the political in the socio-psychological experiences of migration.

**PhD Degree-awarding Institution****PhD Degree**

Psychology

**University**

ISCTE - Instituto Universitário de Lisboa

**Host Institution**

CIS-IUL

**Country**

Portugal

**Title of the Workplan**

Why citizenship matters? Understanding citizenship representations and acculturation strategies of the Chinese community in Portugal.

**Advisors and Affiliations**

Paula Castro, ISCTE-IUL, Eleni Andreouli, Open University UK and Rita Guerra, ISCTE-IUL

PhD STUDENT

CIS-IUL

CENTRE FOR PSYCHOLOGICAL RESEARCH  
AND SOCIAL INTERVENTION**Teresa Maria Carvalho Nascimento**

tmcno@iscte-iul.pt

Portuguese

**Personal Information****Research Interests**

Stigma; intergroup relations; emotions

**Biographical note**

I'm on the 1st year of my PhD in Psychology at ISCTE-IUL. I belong to the CIS-IUL Research Centre. I took my Master in Psychology of Intercultural Relations at ISCTE-IUL. My research interests are Stigma, Intergroup Relations and Emotions.

**PhD Degree-awarding Institution****PhD Degree**

Psychology

**University**

ISCTE - Instituto Universitário de Lisboa

**Host Institution**

CIS-IUL

**Country**

Portugal

**Title of the Workplan**

Perception of emotions on facial expression of others by stigmatized individuals

**Advisors and Affiliations**

Mauro Bianchi, ISCTE-IUL

PhD STUDENT

CIS-IUL

CENTRE FOR PSYCHOLOGICAL RESEARCH  
AND SOCIAL INTERVENTION**Vanessa Russo**

vsfccrusso@gmail.com

Portuguese

**Personal Information****Research Interests**

Early childhood education and care, children development, parenting

**Biographical note**

I have a Master degree in Clinical Psychology since 2011. Since my degree, I've participated in some research projects regarding children disorders, parenting skills and children development. Lately I've worked as a research assistant in the project Playgroups for Inclusion (Grupos Aprender, Brincar, Crescer - GABC) - a new Portuguese Early Childhood Education and Care (ECEC) experimentation policy that was target to children aged 0-4 and their families, that were not participating in the currently available ECEC services. My PhD is about the longitudinal impacts of playgroups in the participating families and children. I'm especially interested in the role of the quality of playgroups and dosage mediating or moderating such impacts. My project will contribute to the discussion regarding the effectiveness of playgroups internationally, and has the objective to influence further policy development in the ECEC area.

**PhD Degree-awarding Institution****PhD Degree**

Psychology

**University**

ISCTE - Instituto Universitário de Lisboa

**Host Institution**

CIS-IUL

**Country**

Portugal

**Title of the Workplan**

Examining Longitudinal impacts of playgroups for families and children: the role of quality and dosage.

**Advisors and Affiliations**

M. Clara Barata, Universidade de Coimbra and Joana Alexandre, ISCTE-IUL

2.5

## RESEARCH UNITS

## CRIA-IUL

WELCOME TO

**CRIA-IUL**  
**CENTRE FOR RESEARCH**  
**IN ANTHROPOLOGY (ISCTE-IUL UNIT)**
**Antónia Lima**

Director of CRIA-IUL

**Dear Researchers,**

**In behalf of CRIA-IUL I would like to warmly welcome you to ISCTE-IUL, in particular to our research unit.**

CRIA-IUL is a branch of the national research centre CRIA, currently the main research institution in Portugal in the field of Anthropology. CRIA is an inter-institutional centre devoted to advanced training and research in Social and Cultural Anthropology. This national platform provides scientific research leadership and an organization that optimizes intellectual and material resources, while promoting new research opportunities at both national and international levels.

The Research at CRIA is carried out within four main research groups:

- i) Circulation and Place-Making;
- ii) Practices and Politics of Culture;
- iii) Governance, Policies and Livelihoods;
- iv) Environment, Sustainability and Ethnography.

By facilitating relations among members of the Universities to which CRIA belongs and by promoting international cooperation with similar institutions and non-governmental organizations, CRIA has enhanced its national and transnational research networks in Anthropology. This has enabled CRIA to maximize resources and capacities that were originally dispersed, resulting in more in-depth scientific work in terms of theory, methodology and how themes are addressed.

**We hope to fulfill your expectations and provide you with a scientific environment and organizational infrastructure to allow a successful implementation of your projects.**

## RESEARCH FELLOWS

CRIA-IUL

CENTRE FOR RESEARCH IN ANTHROPOLOGY  
(ISCTE-IUL UNIT)**Cláudia Petrina Leite da Silva**

claupetrina@yahoo.com.br

Brazilian

## Personal Information

## Research Interests

Fado dance, art, philosophy, becoming body, affect, memory.

## Biographical note

I'm an actress-dancer, art educator and sociologist. I own a master's degree and a PhD in performing arts at Universidade Federal do Estado do Rio de Janeiro (UNIRIO). In my artwork, I exploit a hybrid language between theatre, dance, performance and video installation, seeking to bring together theory and practice, art and life, ancestry and contemporaneity. I was Director of the Artistic-Educational Centre Casarão dos Prazeres in Rio de Janeiro, where I've developed a performance installation on the subject of the 450 years of the foundation of Rio de Janeiro city, performed in the Andanças 2015 Festival, in Portugal. I've been involved in collaborative artistic projects in Brazil and abroad and participating as an independent performer in various international festivals, among them: Festival de Danza (Spain), Devianza (Italy), and Dance Festival Panorama de Dança (Rio de Janeiro). Since 2004, I have teaching experience at high-school and superior levels. I've published several articles in specialized performing arts magazines and newspapers. Currently, I develop a post-doctorate project about the Fado dance with a transdisciplinary and multicultural approach at CREATE/ISCTE-IUL.

## Education

## PhD Degree

Performing Arts

## Country

Brazil

## Institution

Rio de Janeiro Federal University

## Year

2014

## Thesis Title

For a Becoming Performance Body and its Resonances: Training and Creating Experiences (Por um corpo cênico em devir e suas ressonâncias: experiências formativas e de criação)

## Previous position

## Position

Performing arts teacher

## Institution

Rio de Janeiro's City Hall (Municipal Department of Education)

## Country

Brazil

## Title of the Workplan

Between Fados and Carnivals: body, memory, histories and affects

## RESEARCH FELLOWS

CRIA-IUL

CENTRE FOR RESEARCH IN ANTHROPOLOGY  
(ISCTE-IUL UNIT)**Israel Vindeirinho Guarda**

israel.guarda@iscte-iul.pt

Portuguese

## Personal Information

## Research Interests

Suburban urbanities, religion, spatial humanities, spatial patterns, spatial life, space syntax, GIS.

## Biographical note

I've completed the degree in History and Archeology at the Universidade Nova de Lisboa in 2001, working in this field until 2003. My interest in urban and local history directed me to the MA in Art History, in this university, finished in 2006, seeking to analyze the continuity and change of Lisbon city growth. In parallel to my PhD, completed in 2016, I've worked as a Researcher in Art History Institute in UNL, seeking to integrate spatial analysis with the humanities, using space syntax and GIS. I am now researcher at CRIA Instituto Universitário de Lisboa (ISCTE-IUL).

## Education

## PhD Degree

Contemporary Art History

## Country

Portugal

## Institution

Faculty of Humanities and Social Sciences, UNL

## Year

2016

## Thesis Title

Análise Configuracional dos Grandes Conjuntos Urbanos na Região de Lisboa (1945 - 1974): Contributos da Sintaxe Espacial para a História de Arte como História da Cidade

## Previous position

## Position

Researcher

## Institution

Instituto de História de Arte, FCSH/NOVA

## Country

Portugal

## Title of the Workplan

Suburban Urbanities: Formal, spatial and social structures in the Lisbon Metropolitan Area

## RESEARCH FELLOWS

CRIA-IUL

CENTRE FOR RESEARCH IN ANTHROPOLOGY  
(ISCTE-IUL UNIT)**Jason Keith Fernandes**

jason.k.fernandes@gmail.com

Indian

## Personal Information

## Research Interests

Citizenship, secularism, south asia, postcolonial studies, catholicism, anthropology.

## Biographical note

I have graduated from the National Law School of India University with a Bachelors degree in Law. Hoping to move away from purely theoretical exercises in legal reasoning, I subsequently trained in the Sociology of Law, and in 2013 was awarded a PhD in anthropology for my study of the citizenship experiences of Catholics in Goa. My postdoctoral research focuses on the way in which the Catholic Church in Goa has adjusted to Indian modernity. My work explores Portuguese postcolonial experiences in Goa with the idea that learnings from this interstitial location has much to contribute not only to the study of South Asia, but more generally to the world of postcolonial studies. Thanks to my postdoctoral research project I have developed an interest in Christian, but especially Catholic, theology.

## Education

## PhD Degree

Anthropology

## Country

Portugal

## Institution

ISCTE-IUL

## Year

2013

## Thesis Title

Citizenship Experiences of the Goan Catholics

## Previous position

## Position

FCT Doctoral Researcher

## Institution

CRIA/ISCTE-IUL

## Country

Portugal

## Title of the Workplan

Crafting Good Citizens: The Politics of Crafting Indian Citizens from Catholics in Goa

## RESEARCH FELLOWS

CRIA-IUL

CENTRE FOR RESEARCH IN ANTHROPOLOGY  
(ISCTE-IUL UNIT)**Xénia Venusta de Carvalho**

xeniacarvalho@gmail.com

Portuguese

## Personal Information

## Research Interests

Regional expertise: Sub-Saharan Africa and ethnic minorities in Europe. Thematic areas: (i) Construction of identity and memory transmission over several generations; (ii) International development; (iii) Ethnic minorities; (iv) Research methods (qualitative) with a special focus on ethnography, life history and narrative; (v) Post-colonial studies.

## Biographical note

I am an Anthropologist and consultant with expertise on research methodologies, international development, identity construction and memory transmission over three generations in national and international contexts. I have a PhD in education and international development with regional expertise on Sub-Saharan Africa (I had a doctoral studentship from the University of Brighton, UK, from 2012 to 2015), with ethnographic fieldwork from 2011 to 2013 and collection of life histories in 2013 in Mozambique. Before Brighton I was a Lecturer at the Department of Anthropology and Archaeology, University Eduardo Mondlane, in Maputo (Mozambique), teaching in the area of qualitative and ethnographic research, as well Anthropology of Symbolic and Anthropology and Psychology. In Portugal, I was a senior social and political advisor at PCM (Presidency of the Council of Ministers) doing research and writing reports in areas such as migration movements, ethnic conflicts and minorities in Europe, social and political issues in North and Sub-Saharan Africa. Since I graduated in Anthropology by FCSH (UNL) in 1996 I have been working in several academic and non-academic projects.

## Education

## PhD Degree

Education and International Development with a regional expertise on sub-Saharan Africa

## Institution

College of Social Sciences, University of Brighton

## Thesis Title

The construction of knowledge in post-colonial societies: identity and education over three generations in Mozambique

## Country

UK

## Year

2016

## PhD STUDENT

CRIA-IUL

CENTRE FOR RESEARCH IN ANTHROPOLOGY  
(ISCTE-IUL UNIT)**André Castro Soares**

andrecastrosoares@gmail.com

Portuguese

## Personal Information

## Research Interests

Dance, ethnography, globalization, body.

## Biographical note

Throughout my training I have worked mainly in the field of communication. I worked in documentary films with two films: *by the word* (2011) and *Bangaologia* (2015) and after finishing my dissertation thesis, I realized that, more than the answers, I had above all questions that the research made appear: the local appropriations of dances, their commercialization, the discourses on ethnicity, the role of new technologies in the affirmation of ideas and concepts about community, history, social class and, still, the narratives about these dancing practices. Dance acts as a revealer or a pretext to analyze, map and reflect in depth on how these processes are taking place in the circuits of dance production and practice in Lisbon. I'm working in a paper about the globalized kizomba and working field in the city of Lisbon.

## PhD Degree-awarding Institution

## PhD Degree

Anthropology

## Host Institution

CRIA-IUL

## Title of the Workplan

Between the Word and the Body. Dances, Ethnicity and Globalization

## Advisors and Affiliations

Filipe Reis, ISCTE-IUL

## University

ISCTE - Instituto Universitário de Lisboa

## Country

Portugal

## PhD STUDENT

CRIA-IUL

CENTRE FOR RESEARCH IN ANTHROPOLOGY  
(ISCTE-IUL UNIT)**Emiliano Ferreira Dantas**

foto@emilianodantas.com.br

Brazilian

## Personal Information

**Research Interests**

Visual anthropology, rural anthropology, photography and decolonial studies.

**Biographical note**

I'm actually engaged in the Anthropology Doctoral Programme at the Instituto Universitário de Lisboa (ISCTE-IUL). I hold a Master's Degree in Anthropology from the Federal University of Pernambuco (UFPE), in Brazil. The undergraduate degree I got in Social Communication from the Faculdades Integradas Barros Melo (AESO). My education is focusing on visual Anthropology by means the photography techniques investigation. I was teaching photography at AESO high school and participated in some projects as a photographer, in Brazil. That experience included Technical Consultant in the Imaging Inventory Project of the Museum of the Northeast (MUHNE / UNESCO), in 2015. Social Defense Assembly under Lens Focuses in 2012 and 2013, from theory (MUHNE / FUNDAJ). The exhibition Cor à Pele, held at the gallery Janete Costa. Individual exhibition at the Center for Martian Studies in Havana, Cuba, in 2015.

## PhD Degree-awarding Institution

**PhD Degree**

Anthropology

**University**

ISCTE - Instituto Universitário de Lisboa

**Host Institution**

CRIA-IUL

**Country**

Portugal

**Title of the Workplan**

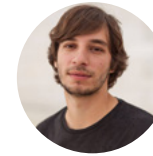
Roça, mato e máscara: an ethnography about practices of liberty in São Tomé

**Advisors and Affiliations**

Paulo Raposo, ISCTE-IUL

## PhD STUDENT

CRIA-IUL

CENTRE FOR RESEARCH IN ANTHROPOLOGY  
(ISCTE-IUL UNIT)**João Nuno Ribeiro Mineiro**

joao.mineiro.6@gmail.com

Portuguese

## Personal Information

**Research Interests**

State, parliament, power, institutions, inequalities.

**Biographical note**

Sociologist, researcher and PhD student in anthropology with research grant from FCT. I hold a Master's degree in Sociology from the Instituto Universitário de Lisboa (ISCTE-IUL) and I'm currently developing PhD thesis with the aim of conducting an ethnography of the Parliament. In the last two years, I've worked as researcher at the Centre for Research in Economic Sociology and Organizations (SOCLUS/ISEG) in a research project about the functioning of the State; and at the Centre for Research and Studies in Sociology (CIES-IUL) in a research about the hazing rituals in Portuguese universities. Currently, I am a researcher in the Centre for Research in Anthropology (CRIA) and a member of the research group "Governance, Policies and Livelihoods". I've presented many communications in scientific meetings and was the author of several articles and book chapters about inequalities and social classes, institutions, youth and precariousness, deontology, professionalization and culture. In my academic course, I've received four Merit Awards, the Caixa Geral de Depósitos Award by the final classification in my degree in Sociology, and a Merit Diploma by my final graduation of 19 values in Master of Sociology.

## PhD Degree-awarding Institution

**PhD Degree**

Anthropology

**University**

ISCTE - Instituto Universitário de Lisboa

**Host Institution**

CRIA-IUL

**Country**

Portugal

**Title of the Workplan**

The Labyrinths of Power: an Ethnography of the Assembly of the Republic

**Advisors and Affiliations**

Catarina Frois, ISCTE-IUL and José Neves, ISCTE-IUL

PhD STUDENT

CRIA-IUL

CENTRE FOR RESEARCH IN ANTHROPOLOGY  
(ISCTE-IUL UNIT)**Mariela Felisbino da Silveira**

mariela.silveira@outlook.com

Brazilian

**Personal Information****Research Interests**

Anthropology; cultural heritage; identity and memory; tourism.

**Biographical note**

PhD student in Anthropology at ISCTE - Instituto Universitário de Lisboa in agreement with PPGAS - Postgraduate Program in Social Anthropology, Federal University of Santa Catarina. Master in Social Anthropology from the Federal University of Santa Catarina. Graduated in Social Sciences from the same institution. I've been working as a consultant in Anthropology at the Superintendence of IPHAN/SC - Institute of National Historical and Artistic Heritage, developed by UNESCO, within the framework of the project; "Dissemination of Intangible Cultural Heritage Policy in Brazil"; Coordination Fieldwork in the Project; "Recipes of Immigration: Language and Memory in the Conservation of Culinary Arts", executed by IPOL - Institute for Research and Development in Linguistic Policy with resources from PNPI - National Program of Intangible Heritage / IPHAN / MinC. And recently, Coordination of the project; "Immigration Languages as heritage: (re) knowing the linguistic diversity in the culinary heritage"; executed by IPOL with resources from the Elisabete Anderle Prize for Cultural Stimulation.

**PhD Degree-awarding Institution****PhD Degree**

Anthropology

**University**ISCTE-IUL / Federal University of Santa Catarina  
(Brazil)**Host Institution**

CRIA-IUL

**Country**

Portugal / Brazil

**Title of the Workplan**

Identity processes and cultural heritage: the construction of the Azorean imaginary descending on the Island of Santa Catarina

**Advisors and Affiliations**

Paulo Raposo, ISCTE-IUL

PhD STUDENT

CRIA-IUL

CENTRE FOR RESEARCH IN ANTHROPOLOGY  
(ISCTE-IUL UNIT)**Pedro Manuel Pereira da Silva**

pedromanuelpereiradasilva@gmail.com

Portuguese

**Personal Information****Research Interests**

Anthropology of food, tourism and heritage.

**Biographical note**

In 2008, I got my Bachelor degree in Tourism studies at Escola Superior de Turismo e Hotelaria / Estoril Higher Institute for Tourism and Hotel Studies, and since then I have been working as an Official Tour Guide in Portugal. In 2010, I obtained my Master degree in Anthropology from ISCTE-IUL with a dissertation about a traditional Lisbon course entitled: "As Iscas com Elas ou Iscas à Portuguesa: Património, Gastronomia e Turismo em Lisboa / Slices of Liver "With Them" or Slices of Liver Portuguese Style: Heritage, Gastronomy and Tourism in Lisboa". Since 2015, I have been working on my PhD project entitled "Gastronomias da Identidade: Turismo, Mar e Mesa em Sesimbra / Gastronomic Identities: Tourism, Sea and Table in Sesimbra" centered in a small and ancient fishing village 40 kms (25 miles) south of Lisbon.

**PhD Degree-awarding Institution****PhD Degree**

Anthropology

**University**

ISCTE - Instituto Universitário de Lisboa

**Host Institution**

CRIA-IUL

**Country**

Portugal

**Title of the Workplan**

Gastronomic Identities: Tourism, Sea and Table in Sesimbra

**Advisors and Affiliations**

Pedro Miguel Pinto Prista Monteiro, ISCTE-IUL



PhD STUDENT

CRIA-IUL

CENTRE FOR RESEARCH IN ANTHROPOLOGY  
(ISCTE-IUL UNIT)

## Vanessa Iglésias Calado Carvalho Amorim

vanessaiglesiasamorim@gmail.com

Portuguese

### Personal Information

#### Research Interests

Grass roots economy, fishing, uncertainty, human ecology, work.

#### Biographical note

I have a bachelor and a Master's degree in Anthropology. Currently I am a PhD student in the same area in ISCTE-IUL with research grant from FCT. I am also a collaborator researcher at the Centre for Research in Anthropology (CRIA). For Master's degree I focused on Setúbal fishing community and I had developed a fieldwork among the fisherfolk. From this investigation resulted my master thesis: Seas of uncertainty: ethnography in the liminar present in Setúbal fishing community. Since then I have collaborated with some organizations related to the sector. In my PhD I aim to continue the same research interests. So I will develop fieldwork among the fishing communities Olhão and Setúbal to analyze how uncertainty is a constitutive element of the everyday lives. In the last years I presented many communications in scientific meetings. During my academic year, I received several Merit Awards, for example, a Merit Diploma by my final graduation in Anthropology Master.

### PhD Degree-awarding Institution

#### PhD Degree

Anthropology

#### Host Institution

CRIA-IUL

#### Title of the Workplan

Safar a vida: uncertainty, informality and crisis in Olhão and Setúbal fishing communities

#### Advisors and Affiliations

Antónia Pedroso de Lima, ISCTE-IUL and Francisco Oneto Nunes, ISCTE-IUL

#### University

ISCTE - Instituto Universitário de Lisboa

#### Country

Portugal

## WELCOME TO

DINÂMIA' CET-IUL  
CENTRE FOR SOCIOECONOMIC  
AND TERRITORIAL STUDIES**Pedro Costa**

Director of DINÂMIA' CET-IUL

**Dear Researchers,**

**DINÂMIA' CET-IUL, Centre for Socioeconomic and Territorial Studies (D'CT) is an ISCTE-IUL interdisciplinary research unit in social and human sciences which combines fundamental and applied research on relevant economic, social and cultural topics.**

It performs advanced international research framed by a sustainable development approach, while pledging to increase knowledge about dynamics and changes of Portuguese society. It seeks to contribute to the understanding of the contemporary world and to the design of the future through the analysis of contexts, actors and consequences of change, encompassing a particular focus on public policy and institutional frameworks. Both analytical and normative thinking in DINÂMIA' CET-IUL is systematically based on interdisciplinary and comparative approaches.

DINÂMIA' CET-IUL gathers researchers from a wide range of academic backgrounds (economics, sociology, law, architecture, regional and urban planning, anthropology, geography, management, quantitative methods, etc.).

**It has three main Research Groups:**

- (i) Innovation and Labour (IL);
- (ii) Cities and Territories (CT);
- (iii) Governance, Economy and Citizenry (GEC).

## RESEARCH FELLOWS

## DINÂMIA'CET-IUL

## CENTRE FOR SOCIOECONOMIC AND TERRITORIAL STUDIES



## Ana Silva Fernandes

ana.sfernandes@gmail.com

Portuguese

### Personal Information

#### Research Interests

Urban policies, spatial justice, social inclusion, informal settlements and peri-urban areas, planning within scarcity, developing countries, territorial asymmetries, participation and heritage

#### Biographical note

I'm an architect and researcher, with postgraduate studies on architectural heritage, and a PhD thesis on policies for improvement of informal areas, focusing on African territories. I have been undertaking applied research both in the Portuguese context and in developing countries, being interested in urban policies, spatial justice, social inclusion, informal settlements and peri-urban areas, territorial asymmetries, participation and heritage. I'm nowadays a post-doctoral researcher on the impacts of the infrastructural network in the transformation of the territory in Mozambique, as well as on participatory policies for overcoming the social asymmetries in its access, and for the improvement of deprived areas. I'm also a member of the research project "Coast to Coast - Late Portuguese Infrastructural Development in Continental Africa (Angola and Mozambique): critical and historical analysis and postcolonial assessment", coordinated by Ana Vaz Milheiro and hosted by ISCTE-IUL. Previously, I've worked on regional studies at CEAU-FAUP, where I've participated in the analysis, cartography and guidelines for tackling recent socio-spatial challenges in the northwest of Portugal. Experience in policy analysis, spatial analysis (GIS, statistical data, architectural surveying), database management and cartography. I participated in university classes, theses supervisions, national and international conferences and journals.

### Education

#### PhD Degree

Architecture - Urban Dynamics and Forms

#### Country

Portugal

#### Institution

Faculty of Architecture, University of Porto (FAUP)

#### Year

2016

#### Thesis Title

'Between mending and fixing. Structuration and participation as tools for managing scarcity and breaking the poverty cycle. São Tomé and Príncipe as a laboratory.'

### Previous position

#### Position

Researcher (within a project on territorial cohesion of the Northwest to Portugal)

#### Institution

Centre for Architecture and Urban Studies (CEAU), Faculty of Architecture, University of Porto (FAUP)

#### Country

Portugal

#### Title of the Workplan

'COMMON SPACES. Between public works and self-produced housing: collective mobilization for urban qualification in Mozambique.'

## RESEARCH FELLOWS

## DINÂMIA'CET - IUL

## CENTRE FOR SOCIOECONOMIC AND TERRITORIAL STUDIES

**Inês Rodrigues**

rodrigues.ineslima@gmail.com

Portuguese

## Personal Information

## Research Interests

Modern architecture; author's monographs; luso-angolan architects; architectural project

## Biographical note

I recently finished my PhD about Lusophone Modern Collective Housing. Since 2006 I'm a member of the research group FORM, directly connect with the line "Modern Form" of the master and doctoral programme of the Department of Architectural Projects, Escuela Superior Técnica de Arquitectura de la Universidad Politécnica de Barcelona. I've published several articles in academic journals and participated in numerous seminars and conferences in Portugal and abroad. Among them are the project "Ignored Modernity, Modern Architecture in Luanda", organized by the Faculty of Architecture - University of Lisbon, University Alcalá de Henares (Madrid), University Agostinho Neto (Luanda) and the conference "Research methodologies" and the article "When collective housing made the city, the case of Luanda Modern", in 2011; and the different seminars and volumes of the collection "Documents of Modern Architecture in Latin America", edited by FORM, ESTAB-UPC (Barcelona, 2006-2013), among which stands out "The permanence of the type" in Volume IV, 2010 and "section for the classroom" in Volume V (2013). In parallel to the research, I'm a Professor of Architecture Project and History of Contemporary Architecture at the University School of Arts of Coimbra and continue with the practical activity in my own atelier.

## Education

## PhD Degree

Department of Architectural Projects

## Country

Spain

## Institution

Escuela Superior Técnica de Arquitectura de la Universidad Politécnica de Barcelona

## Year

2014

## Thesis Title

When collective housing was modern. From Portugal to other Portuguese speaking countries. 1948-1974.

## Previous position

## Position

Teacher

## Institution

ARCA-Escola Universitária das Artes de Coimbra

## Country

Portugal

## Title of the Workplan

I Modern Monographic Trilogy: Vieira da Costa, Simões de Carvalho, Castro Rodrigues

## RESEARCH FELLOWS

## DINÂMIA'CET - IUL

## CENTRE FOR SOCIOECONOMIC AND TERRITORIAL STUDIES

**Jorge Bassani**

jorge.bassani@gmail.com

Brazilian

## Personal Information

## Research Interests

Physical and cultural transformations of urban territories. Relations between art, urban culture and city

## Biographical note

Born in São Paulo, Brazil, in 1959. Graduated in architecture and urbanism with a postgraduate degree in urban studies at the interface between urbanism and culture. Since the 1980s, I've worked with art in urban space, participated in artistic collectives in São Paulo, performing ephemeral interventions in the city, and later with public sculptures. From the 1990s I moved the research to the academic field, and between 1994 and 2005 I have attended postgraduate and completed master's dissertation on the arts in the city with the work "Artistic languages and the city" and the doctoral thesis "The function Is the communication", in which was made the evaluation of the impacts of urban projects on the cultural quotidian of São Paulo and its morphological marks in recent history. I am currently a professor at the Faculty of Architecture and Urbanism of the University of São Paulo in the area of history and theory of urbanism and coordinator of the "Group of Urban Mapographies Studies", dedicated to the mapping of sociocultural activities related to large metropolises.

## Education

## PhD Degree

Architecture and urbanism.

## Country

Brazil

## Institution

Faculty of Architecture and Urbanism of the University of São Paulo

## Year

2005

## Thesis Title

Bairro(s) do Restelo. Panorama Urbanístico e Arquitectónico

## Previous position

## Position

Professor doctor

## Institution

Faculty of Architecture and Urbanism of the University of São Paulo

## Country

Brazil

## Title of the Workplan

From the artistic interventions in the city to the urban policy action

## RESEARCH FELLOWS

DINÂMIA'CET - IUL

CENTRE FOR SOCIOECONOMIC AND TERRITORIAL STUDIES

**Patrícia Bento d'Almeida**

patricia.bento.almeida@iscte.pt

Portuguese

## Personal Information

**Research Interests**

Architecture, urbanism, history of art

**Biographical note**

I am an architect (Universidade Lusíada de Lisboa, 2000), with a master (FCSH-UNL, 2006) and a PhD (FCSH-UNL, 2013) in Art History. Currently I'm an integrated member of the research team at DINÂMIA'CET-IUL, Centre for Socioeconomic Change and Territorial Studies and researcher of the post-doctoral project LNEC's and the Architecture Research History (SFRH/BPD/117167/2016). The main scientific research areas and teaching activity are relation with Contemporaneous History of Architecture and Urbanism, Theory of Architecture, History of Art and Artistic Studies. My scientific activity also includes curatorship of architecture exhibitions (Centro Cultural de Belém, 2017) and inventory of the architectural and urban heritage. I have participated in several research projects with national and international research teams and developed critical texts published in books and several articles in specialized magazines.

## Education

**PhD Degree**

Art History

**Country**

Portugal

**Institution**

Faculdade de Ciências Sociais e Humanas - Universidade Nova de Lisboa

**Year**

2013

**Thesis Title**

Bairro(s) do Restelo. Panorama Urbanístico e Arquitectónico

## Previous position

**Position**

Information not available

**Institution**

Information not available

**Country**

Information not available

**Title of the Workplan**

LNEC's and the Architecture Research History (SFRH/BPD/117167/2016)

## PhD STUDENT

DINÂMIA'CET - IUL

CENTRE FOR SOCIOECONOMIC AND TERRITORIAL STUDIES

**Alessandro Colombo**

alessandro.colombo\_urb@virgilio.it

Italian

## Personal Information

**Research Interests**

European and national urban policies, collaborative and multilevel governance, distressed urban areas, socio-spatial segregation, inter-organizational innovation

**Biographical note**

Urban planner (2013, IUAV-Venice and FAUTL-Lisbon) and PhD student in Public Policies at ISCTE-IUL. I am actually a research assistant (January 2017-June 2017) at IGOT-Universidade de Lisboa for the project "exPERts - Making sense of planning expertise: housing policy and the role of experts in the "Programa Especial de Realojamento (PER)", ref. PTDC/ATP-EUR/4309/2014, where I work on spatial analysis issues, Mapping the PER' process in the AML by using Geographic Information Systems in a mixed method research perspective. I am specialized in local and territorial development, with particular interest in decision-making processes in distressed urban areas, within the methodological framework of public policy analysis. My main research interest is multilevel governance and collaborative systems for the reduction of poverty. I've worked in several research project at international level, focused on urban development in informal settlements (North Africa and South Europe), following participatory approaches and methodologies. Finally, I am also Managing Editor of STUDIO Architecture and Urbanism Magazine, an international independent publication based in Milan (Italy).

## PhD Degree-awarding Institution

**PhD Degree**

Public Policies

**University**

ISCTE - Instituto Universitário de Lisboa

**Host Institution**

DINÂMIA'CET-IUL

**Country**

Portugal

**Title of the Workplan**

New forms of multilevel governance in urban policies. Opportunities, limits and paradoxes beyond regeneration processes in distressed urban areas.

**Advisors and Affiliations**

José Manuel Esteves Henriques, ISCTE-IUL

PhD STUDENT

DINÂMIA'CET - IUL

CENTRE FOR SOCIOECONOMIC AND TERRITORIAL STUDIES

**Filipe Mónica**

fm@filipemonica.com

Portuguese

**Personal Information****Research Interests**

Architecture competitions

**Biographical note**

I was born in 1972, graduated in architecture at Faculdade de Arquitectura de Lisboa in 1996. After that I worked in the studios of Gonçalo Byrne and Aires Mateus. In 2001 I've founded my own studio, where I've been continuously working until today. My architectural work include several scale and type of commissions, as well as collaborations with other architects. Between 2010 and 2014 I was a consultant at the Portuguese Architectural Council (Ordem dos Arquitectos), and Between 2014 and 2015 I was Professor at Lusófona University and ISCTE-IUL, both in Lisbon. I have also been regularly invited to be a part of architectural school juries. Since 2012 I'm a Phd candidate at ISCTE-IUL. My work has been published in several books and magazines, and received the National Rehabilitation Awards for the Best Intervention in Lisbon and Best Energy Efficiency (2016) and the Construir Prize for Environmental Sustainability (2016).

**PhD Degree-awarding Institution****PhD Degree**

Architecture of Contemporary Metropolitan Territories

**University**

ISCTE - Instituto Universitário de Lisboa

**Host Institution**

DINÂMIA'CET-IUL

**Country**

Portugal

**Title of the Workplan**

Seleção Natural – A cultura do Concurso de Arquitectura em Portugal (1993-2013)

**Advisors and Affiliations**

Paulo Tormenta Pinto, ISCTE-IUL

PhD STUDENT

DINÂMIA'CET - IUL

CENTRE FOR SOCIOECONOMIC AND TERRITORIAL STUDIES

**João Cardim Ribeiro**

caardim@gmail.com

Portuguese

**Personal Information****Research Interests**

Architecture, urban studies, cities and territories

**Biographical note**

I (Sintra, 1987) completed the Master Degree in Architecture (November 2011) at ISCTE-IUL (Lisbon University Institute), with a dissertation entitled 'Vacation Houses: summer residential architecture in Colares 1940-74'. I will begin my PhD research in September 2017, in the Programme in Architecture of Contemporary Metropolitan Territories at ISCTE-IUL. I have collaborated in various research projects, including Homes for the biggest number: Lisbon, Luanda, Macao (2014-2015), coordinated by Ana Vaz Milheiro. Within this project, I co-organized the International Conference Optimistic Suburbia – Large housing complexes for the middle-class beyond Europe (20-22 May 2015) and was editor of the book 'Optimistic Suburbia? The Student's Perspective 2' (2016). I have participated in conferences within the field of architecture and urbanism in various countries (Portugal, Italy and Brazil), and have articles published in books, reviews, international indexed publications and seminar proceedings. I write regularly about architecture and urbanism in the biweekly newspaper "As Artes entre As Letras". I was an intern architect at the Department of Urban Renewal of the Lisbon City Council (2012) and a fellow researcher working in the Office of Strategic Projects of the Santarém City Council (2016). I worked in several architecture offices, including the award-winning practice Miguel Marcelino, Arquitecto (2015-2017).

**PhD Degree-awarding Institution****PhD Degree**

Architecture of Contemporary Metropolitan Territories

**University**

ISCTE - Instituto Universitário de Lisboa

**Host Institution**

DINÂMIA'CET-IUL

**Country**

Portugal

**Title of the Workplan**

Da Célula à Cidade: Composição Modular e Planeamento Urbano na Obra de Justino Morais (1966-1975)

**Advisors and Affiliations**

Paulo Tormenta Pinto, ISCTE-IUL and Ana Vaz Milheiro, ISCTE-IUL

## PhD STUDENT

DINÂMIA'CET - IUL

CENTRE FOR SOCIOECONOMIC AND TERRITORIAL STUDIES

**Mariana Sanchez Salvador**

marianasanchezsalsalvador@gmail.com

Portuguese

## Personal Information

**Research Interests**

Architecture, landscape, history of the house, food systems, food history, food design

**Biographical note**

I'm a Portuguese architect and researcher at DINÂMIA'CET-IUL (ISCTE-IUL, Lisbon, PT). I've graduated in Architecture at the Faculty of Architecture of the Technical University of Lisbon, and worked at Carrilho da Graça Arquitectos studio, where I've collaborated on numerous projects, from urban plans to public equipments, refurbishment and temporary installations. My research focuses on how the spaces we inhabit — from the city to the house — are transformed by the food we eat, and by foodrelated activities. I was awarded the Architect Quelhas dos Santos Prize for Best Masters Dissertation in Architecture (FAUL - Faculty of Architecture, University of Lisbon), recently published in Portuguese under the title "Arquitetura e Comensalidade: uma história da casa através das práticas culinárias". I'm currently developing my PhD thesis in Urban Studies, at FCSH-UNL and ISCTE-IUL, in Lisbon, supported by a PhD Fellowship awarded by the Foundation for Science and Technology (FCT).

## PhD Degree-awarding Institution

**PhD Degree**

Urban Studies

**University**

ISCTE - Instituto Universitário de Lisboa

**Host Institution**

DINÂMIA'CET-IUL

**Country**

Portugal

**Title of the Workplan**

The Foodscape of Lisbon: the evolution of urban form during the 19th and 20th centuries

**Advisors and Affiliations**

Teresa Marat-Mendes, ISCTE-IUL and Maria do Rosário Oliveira, ICS-UL

## PhD STUDENT

DINÂMIA'CET - IUL

CENTRE FOR SOCIOECONOMIC AND TERRITORIAL STUDIES

**Sebastiano Raimondo**

s3bastiano.r4imondo@gmail.com

Italian

## Personal Information

**Research Interests**

Architecture, arts and photography

**Biographical note**

I was born in Gangi, Italy, 1981. Graduated in architecture at Palermo in 2013 with a dissertation entitled "Uma Ponte - la fotografia un modo di abitare il mondo e costruirlo" oriented by Giovanni Chiaramonte (IULM e NABA - Milano) and Paulo Tormenta Pinto (DINÂMIA'CET-IUL) and Marcello Panzarella (UNIPA). Founding member of Associação Cultural "Presente Infinito", where, with other Italian photographers, I developed publications, exhibitions and projects common to several cities around the world since 2014. My interests are focused on the concept of customs of living and in which the photographic language can contribute to an understanding, that is to ontologically inquire the photograph and its peculiar way of "storing". Currently, I'm a PhD Fellow by the Fundação para a Ciência e a Tecnologia (FCT) in the Doctoral Programme "Arquitetura dos Territórios Metropolitanos Contemporâneos" (ISCTE-IUL/ DINAMIA'CET-IUL) and pursue my studies in photography with the themes "Places" in contemporary photography, the dialectic space / place in the photographic language in Portugal and Italy in the decades of 80 and 90. This study aims to define a way of understanding the photograph that looks at contemporary territories; build the basis for an artistic project between the photographers of this two countries - Portugal and Italy.

## PhD Degree-awarding Institution

**PhD Degree**

Architecture of Contemporary Metropolitan Territories

**University**

ISCTE - Instituto Universitário de Lisboa

**Host Institution**

DINÂMIA'CET-IUL

**Country**

Portugal

**Title of the Workplan**

"Places" in contemporary photography, Portugal and Italy in the decades of 80 and 90.

**Advisors and Affiliations**

Paulo Tormenta Pinto, ISCTE-IUL and Giovanni Chiaramonte, IULM/NABA - Milano

2.7

RESEARCH UNITS

ISTAR-IUL

WELCOME TO

ISTAR-IUL

INFORMATION SCIENCES,  
TECHNOLOGIES AND ARCHITECTURE  
RESEARCH CENTER**Nuno Guimarães**

Director of ISTAR-IUL

**Dear colleagues,  
researchers of ISCTE-IUL,**

**On behalf of ISTAR-IUL I would like to welcome and invite you to participate in all our initiatives during your stay at ISCTE-IUL.**

ISTAR-IUL is a research and development centre specialized in the innovative application of Information and Communication Technologies.

The ISTAR-Information Sciences and Technologies and Architecture Research Center is a ISCTE-IUL unit that has the mission to carry out applied and multidisciplinary research in the convergence of areas like Computer Science and Information Technologies, Mathematics (applied to computational problems), Architecture and Urbanism (in its digital dimensions, either conceptual, modelling, simulation or fabrication). ISTAR-IUL is concerned with the analysis, design, and construction of human-based systems, focusing, in its creation, on the design of digital living spaces, on the design and construction of information systems and software, and on complexity studies and computational modeling as understanding tools.

Please do not hesitate to browse our website <http://istar.iscte-iul.pt> or to make us a visit (DO.10).



PhD STUDENT

ISTAR-IUL

INFORMATION SCIENCES, TECHNOLOGIES  
AND ARCHITECTURE RESEARCH CENTER**Daniela Moreira da Silva**

danielamoreirasilva@gmail.com

Portuguese

**Personal Information****Research Interests**

Digital Fabrication; processes and digital tools to support creative design; methodologies in the design studio.

**Biographical note**

I'm an architect and a researcher. I've graduated in 2008 in Architecture from ULHT-Lusófona University of Humanities and Technologies and in 2011 I've completed the Master degree in Architecture from the same university, in Lisbon. With a career markedly multifaceted and international, I've worked in France, Japan, Italy and China. In 2013 I have collaborated as an architect with the Office Wonk Architectes in Lille, France. In 2014 I went to Tokyo, Japan, to collaborate with the Office Sou Fujimoto Architects in various projects for China, Brazil and Japan. Later in 2014 and 2015 I was invited by Architect Tony Van Raat from the University of New Zealand "UNITEC Institute of Technology" to teach in an Architectural Program between this University and Shandong Jianzhou University in Jinan, China. Currently in Lisbon, I divide my professional activity between practice at the office NOZ Arquitetura while developing my PhD at ISCTE-IUL in Lisbon, in the area of Digital Architecture, being one of my research interests.

**PhD Degree-awarding Institution****PhD Degree**

Architecture of Contemporary Metropolitan Territories. Specialty: Digital Architecture

**University**

ISCTE - Instituto Universitário de Lisboa

**Host Institution**

ISTAR-IUL

**Country**

Portugal

**Title of the Workplan**

The impact of digital fabrication on design methods and architectural practice

**Advisors and Affiliations**

Alexandra Paio, ISCTE-IUL and José Pedro Sousa, FAUP

## PhD STUDENT

## ISTAR-IUL

INFORMATION SCIENCES, TECHNOLOGIES  
AND ARCHITECTURE RESEARCH CENTER**Filipe Jorge da Silva Brandão**fjsbo@iscte-iul.pt  
Portuguese

## Personal Information

**Research Interests**

Digital fabrication, building renovation, parametric design

**Biographical note**

I am a photographer and architect from Braga living in Porto, and have worked as an independent architect since 2007. I have a degree in architecture by FAUP (Faculty of Architecture of the University of Porto), and a post-graduation in Digital Architecture from CEAAD (Advanced Studies Course in Digital Architecture), jointly organized by ISCTE-IUL and FAUP. I won a research grant from Amorim Isolamentos and developed the thesis Cork Re-Wall: Computational Methods of Automatic Generation and Digital Fabrication of Cork Partition Walls for Building Renovation. I'm a PhD student at ISCTE-IUL doctoral program, recipient of ISTA merit scholarship with Cork Re-Wall research project and ISTAR-IUL member. I was an Erasmus student at the MoNArch 2003-2004 program in the Department of Architecture of the University of Oulu in Finland. I have collaborated with Cruz&Alarcão, ANC-Arquitectos and Grupo3. For two years and a half I lived in Angola where I was the Building Site Manager of Sonamet Headquarters in Lobito and vice-director of JFS Angola. In 2012 I co-founded the architecture and urbanism collective PARQR.

## PhD Degree-awarding Institution

**PhD Degree**

Architecture of Contemporary Metropolitan Territories. Specialty: Digital Architecture

**Host Institution**

ISTAR-IUL

**University**

ISCTE - Instituto Universitário de Lisboa

**Country**

Portugal

**Title of the Workplan**

Cork Re-Wall: Métodos computacionais de geração automática e fabricação digital de paredes divisórias para a reabilitação de edifícios.

**Advisors and Affiliations**

Alexandra Cláudia Rebelo Paio, ISCTE-IUL, John Christopher Whitelaw, Pratt Institute, NY, and MAKE MAIS

## PhD STUDENT

## ISTAR-IUL

INFORMATION SCIENCES, TECHNOLOGIES  
AND ARCHITECTURE RESEARCH CENTER**Francisco Cano Marchal**fcanomar@gmail.com  
Spanish

## Personal Information

**Research Interests**

Collective behaviour in living systems, quantum biology, complexity science

**Biographical note**

Industrial (Universidad Politécnica de Madrid) and Centralian (École Centrale de Paris) Engineer, with emphasis in computational mathematics and complex systems. Business Intelligence Manager in CM EUROPA (Spain). Currently PhD student in ISCTE-IUL/FCUL conducting research on collective and quantum effects on living beings. Kundalini Yoga teacher and meditator, also investigating body-mind techniques and phenomenological approaches to the study of consciousness.

## PhD Degree-awarding Institution

**PhD Degree**

Complexity Science

**Host Institution**

ISTAR-IUL, FCUL

**Title of the Workplan**

Quantum Coherence in Living Beings

**Advisors and Affiliations**

Rosário Laureano and Luis Bagatolli, ISCTE-IUL

**University**

ISCTE-IUL/FCUL

**Country**

Portugal

## PhD STUDENT

## ISTAR-IUL

INFORMATION SCIENCES, TECHNOLOGIES  
AND ARCHITECTURE RESEARCH CENTER**Lázaro Ourique**

lazaro.ourique@gmail.com

Portuguese

## Personal Information

**Research Interests**

Space syntax, biometeorology, space use, virtual reality, architecture, urban design

**Biographical note**

I've graduated with a MSc. in Architecture and Urban Design (FA-UL 2014) and with a European MSc. in Planning and Policies for the City, Environment and Landscape (FA-UL & IUAV 2014) under the theme "For a New Urbanity - Vendas Novas, Regeneration and Reintegration of the Industrial Hub". Currently I work as Research Assistant at the Information Sciences, Technologies and Architecture Research Center (ISTAR-IUL) at ISCTE-IUL in Lisbon, Portugal. Previously I've worked at ADETTI-IUL (2014-2015), at Elemento Arquitectura (2014) and collaborated with Assistant Professor Francisco Serdoura (FA-UL 2012-2013) and Assistant Professor Carlos Ferreira (FA-UL 2010-2011). Through my work I have acquired extensive experience in the areas of Space Syntax, Space Use and Space Perception and became well versed in areas like Virtual Reality, Augmented Reality, Eye-tracking, Biometric Data Collection and the Monitoring of Human Subject Experiments. Currently I'm developing a PhD project in the Use of Public Urban Space integrating Space Syntax and Biometeorology methodologies.

## PhD Degree-awarding Institution

**PhD Degree**

Architecture of Contemporary Metropolitan Territories. Specialty: Digital Architecture

**Host Institution**

ISTAR-IUL

**University**

ISCTE - Instituto Universitário de Lisboa

**Country**

Portugal

**Title of the Workplan**

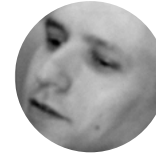
Bioclimatic Comfort and Life in Public Space - New techniques for space analysis considering environmental effects

**Advisors and Affiliations**

Sara Eloy, ISCTE-IUL and Manuel de Arriaga Brito Correia Guedes, Instituto Superior Técnico - Universidade de Lisboa

## PhD STUDENT

## ISTAR-IUL

INFORMATION SCIENCES, TECHNOLOGIES  
AND ARCHITECTURE RESEARCH CENTER**Ricardo Mendes Correia**

rfmcj@iscte-iul.pt

Portuguese

## Personal Information

**Research Interests**

Transdisciplinary digital architecture; history of architecture; data visualization

**Biographical note**

Graduated in Landscape Architecture (ISA-UL 1997). Post-graduation in Geographic Information Systems (IST-UL, 2001). Currently I'm a PhD student researching at the Information Sciences, Technologies and Architecture Research Center (ISTAR-IUL) at ISCTE-IUL in Lisbon, Portugal. Through my work I have acquired extensive experience in the areas of Geographic Information Systems, Computer Aided Design, Urban Design and Planning.

## PhD Degree-awarding Institution

**PhD Degree**

Architecture of Contemporary Metropolitan Territories. Specialty: Digital Architecture

**Host Institution**

ISTAR-IUL

**University**

ISCTE - Instituto Universitário de Lisboa

**Country**

Portugal

**Title of the Workplan**

Transdisciplinary vision of digital architecture through computational methods of mapping, analysis and visualization

**Advisors and Affiliations**

Alexandra Paio, ISCTE-IUL and Daniel Cardoso Llach, CMU

2.8

RESEARCH UNITS

IT-IUL

WELCOME TO

IT-IUL

INSTITUTO DE TELECOMUNICAÇÕES  
(ISCTE-IUL BRANCH)**Isabel Alexandre**

Director of IT-IUL

**Dear researchers,**

**I would like to welcome you all to ISCTE-IUL and in particular to IT-IUL which is our university research unit in the broad topic of telecommunications.**

IT-IUL is the ISCTE-IUL branch of the national IT laboratory which includes 6 universities and 2 telecommunications companies. IT has sites in several cities in Portugal. The research at IT is divided in the following major areas: wireless communications, optical communications, networks, multimedia and basic supporting sciences for telecommunications. Overall IT has about 530 permanent researchers either holding a PhD degree or enrolled in a PhD program. At the IT-IUL branch we have 37 permanent researchers. Each year IT publishes about 390 papers in international peer reviewed journals and 420 conference papers.

**I wish a successful research work to all new comers and please do not hesitate to contact me if you need any help in your integration into our unit.**

PhD STUDENT

IT-IUL

INSTITUTO DE TELECOMUNICAÇÕES  
(ISCTE-IUL BRANCH)**Bruno Rafael Pereira Pinheiro**

bruno\_pinheiro@iscte-iul.pt

Portuguese

**Personal Information****Research Interests**

Optical fiber communications, optical communications system modelling

**Biographical note**

I was born in Lisbon, Portugal. In 2013, I've received the B.E. in Telecommunications and Computer Engineering at ISCTE-IUL. In 2015, I've received the M.Sc. degree in Telecommunications and Computer Engineering at ISCTE-IUL in which the research work was the in-band crosstalk in optical fiber networks. Since 2015, I've been in research positions within the Instituto de Telecomunicações, in which I've been focusing on the study of the impact of in-band crosstalk on the performance of optical networks using single or multi-core fibers. My main present research interests include fiber optic communication systems networks based on multi-core fibers.

**PhD Degree-awarding Institution****PhD Degree**

Information Science and Technology

**University**

ISCTE - Instituto Universitário de Lisboa

**Host Institution**

IT-IUL

**Country**

Portugal

**Title of the Workplan**

Inter-core crosstalk limitations in coherent detection multicore fiber-based transmission systems

**Advisors and Affiliations**

João L. Rebola, ISCTE-IUL and Adolfo V. T. Cartaxo, ISCTE-IUL

PhD STUDENT

IT-IUL

INSTITUTO DE TELECOMUNICAÇÕES  
(ISCTE-IUL BRANCH)**Jorge Pedro da Costa Mendes Teixeira**

jpcmt@iscte-iul.pt

Cape Verdean and Portuguese

**Personal Information****Research Interests**

Transmitt-array for satellite communication

**Biographical note**

I was born in Santiago, Cabo-Verde, in 1988. I've received the graduation and M.Sc. degrees in telecommunication and computer engineering from the Instituto Universitário de Lisboa (ISCTE-IUL) in 2014 and 2016, respectively. I'm currently a PhD student at ISCTE-IUL and a researcher at Instituto de Telecomunicações (IT-IUL), Lisbon, Portugal. My present research interest is transmitt-array for satellite communication.

**PhD Degree-awarding Institution****PhD Degree**

Information Science and Technology

**University**

ISCTE - Instituto Universitário de Lisboa

**Host Institution**

IT-IUL

**Country**

Portugal

**Title of the Workplan**

Development of Low Profile Transmit-array Antennas for the Next Generation of Mobile Satellite Communication

**Advisors and Affiliations**

Sérgio A. Matos, ISCTE-IUL and Jorge R. Costa, ISCTE-IUL

RESEARCH  
WEEK 2017  
ISCTE-IUL

3

RESEARCH  
AT ISCTE-IUL

## ISCTE-IUL Research, learning and teaching +40 years exploring the future

**The Instituto Universitário de Lisboa (ISCTE-IUL) is a high-quality public university institute established in 1972 and one of the most dynamic and innovative in Portugal, mainly in the areas of Business Studies & Economics, Social Sciences & Public Policy and Technologies & Architecture.**

ISCTE-IUL consistently aims for higher levels of excellence, innovation, internationalization and entrepreneurship.

ISCTE-IUL has established national and international cooperation with a large number of universities and research institutes as well as public, private and third sector organizations and has been participating in several international funded projects, research programs and networks of scientific cooperation.

ISCTE-IUL is a research-oriented university with a multidisciplinary and inter-disciplinary approach, including 8 Research Units that integrate around 1.000 researchers who run research projects and other scientific activities on a regular basis. More than half of them are academic staff or full-time researchers with PhD, from which approximately 20% are foreigners, all of whom make significant contributions to the

excellence and international recognition of the Institute's research activity. The others are PhD students and research assistants.

The researchers at ISCTE-IUL publish more than 850 international peer reviewed scientific papers peer year and continuously run more than 200 national and international scientific projects.

## Research vision and strategy

**The mission of ISCTE-IUL is to produce, transmit and transfer scientific knowledge in accordance with international standards, providing economic, social and cultural value to society.**

The strategy to conduct excellent research at ISCTE-IUL passes by the establishment of objectives that are focused on increasing cutting edge research, internationalization, quality assurance in education and in creating conditions that favour the development of an organizational culture of entrepreneurship, innovation and knowledge transfer to society.

Research activities are crucial to ISCTE-IUL. They fulfil the mission of producing scientific knowledge and participating in international agendas and networks for the advancement of knowledge in the Institute's three main areas of expertise. Research activities and results are also very important at ISCTE-IUL for designing teaching programmes and keeping them up to date, and for the students training in PhD programmes, but also in the master's and undergraduate programmes.

### OVERALL RESEARCH OBJECTIVES

---

Increase the scientific output and its internationalization

---

Promote the practical application of knowledge to institutions, economy and society

---

Strengthen the bonds between research and education

---

## Research impact

**ISCTE-IUL has established national and international extensive cooperation with leading universities and research networks, as well as with public, private and third sector organizations. ISCTE-IUL also cooperates with local governments on social policy and promotion of an entrepreneurial culture.**

ISCTE-IUL alumni also work in the top management of private companies or occupy positions in local or central government and contribute to public debates in society.

The ISCTE-IUL research impact is also recognized, each year, through Scientific Awards that distinguish the excellence of scientific publications in the top-notch international journals, attained by the professors and researchers of the Institute.



## Research Support

**ISCTE-IUL has several services and boards that assure the quality of processes and support research activities, as is the case of the Research Support Office, the Research Units, the Library, the Evaluation, Planning and Quality Office, the Finance Department, etc.**

Each research unit has specialized teams, management and administrative staff, that support researchers in their research projects, legal, ethic and intellectual property issues, grant applications, negotiating contracts, planning, costing and pricing of research, etc.

Six laboratories at ISCTE-IUL support the research and teaching activities.

## Research Structure at ISCTE-IUL

**Fernando Luís Machado**  
Vice-Rector for Research

### Research Support Office

#### 8 Research Units

- > Director
- > Scientific Commission
- > Research Groups/ Research Team
- > Technical and Administrative Staff

## Research Units Support

The research structure at ISCTE-IUL is based on decentralised research units with administrative and management autonomy.

### RESEARCH UNITS AT ISCTE-IUL

#### PRE-AWARD FINANCE

Provides guidance, information, and advice on programmes, and funding opportunities;

Consortium support;

Support on the submission of grant applications.

#### POST-AWARD FINANCE

Management of research projects;

Responsibility for submitting invoices, claims and statements of expenditure.

#### NEGOTIATIONS

Negotiations support.

**RESEARCH SUPPORT OFFICE**

## Research Support office

**The Research Support Office (RSO), which is part of the Rectory Services, aims to foster quality, volume and internationalization of scientific research at ISCTE-IUL, and help placing research units at high performance and classification levels at the Foundation for Science and Technology (FCT).**

In pursuing its mission, the RSO provides the following support to the research units:

---

Enables the research units to take informed decisions about the participation in EU programmes and maximises the opportunities to obtain funding

---

Supports the research units participation in research programmes by providing information and interface with the appropriate bodies

---

Provides assistance to the research units in the acquisition of new skills to support research activities

---

Identifies funding opportunities, organises info sessions and meetings to promote the participation of research units in the calls

---

Validates the proposals and provides University's authorisation for submission

---

Is responsible for negotiating contract terms with funders, consortia agreements and collaboration agreements with other institutions, with the support of the research units

---

Monitors all running projects

---

Works as helpdesk for the new project management information software

---

Provides support on legal issues, conflict of interests, intellectual property, etc., with the assistance of other ISCTE-IUL offices

The RSO also systematizes and prepares data for dissemination of scientific output, and supports the management of funds, projects, contracts, grants, networks, publications, meetings and other scientific activities, in support to the research units' own structures.



### Research Support Office contacts

#### Sónia Viveiros

sonia\_viveiros@iscte-iul.pt  
ext. 295301

#### Carina Cunha

carina.cunha@iscte-iul.pt  
ext. 295320

#### Raquel Cruz

raquel.cruz@iscte-iul.pt  
ext. 295302

#### Research Support Office

gai@iscte.pt  
Tel. +35121 0464 171/2  
Building I, floor 2, room: S12

## Research units

**ISCTE-IUL has eight research units that develop high quality research. These research units have to periodically undergo the international external evaluation performed by the Fundação para a Ciência e a Tecnologia (FCT) and most of them have top ratings.**

The autonomy of the research units allows them to develop their own strategies to foster the high quality and impact of their research. The policy of ISCTE-IUL is to create financial mechanisms that allow the research units to achieve these goals.

**The BRU-IUL is a multidisciplinary research unit involving the Scientific Areas of Accounting; Economics; Finance; Organizational Behaviour and Human Resources; Management Studies, as well as the corresponding Applied Quantitative Methods. The BRU-IUL is accredited by the Fundação para a Ciência e Tecnologia (FCT, IP.).**

The researchers of BRU-IUL are mainly, but not exclusively, faculty members of ISCTE-IUL. Most researchers have completed their doctoral and post-doctoral studies abroad and have diverse ethnic and geographic origins.

MORE INFORMATION [HERE](#)

### Board of Directors

#### DIRECTOR

Maria de Fátima Salgueiro

#### SCIENTIFIC COMMITTEE

José Carlos Dias  
Luís Filipe Martins  
Maria de Fátima Salgueiro  
Ralitza Nikolaeva

### Research Unit Support

#### PRE-AWARD FINANCING SUPPORT



**Vesna Bozanic**  
vesna.bozanic@iscte-iul.pt  
ext. 291905

#### POST-AWARD FINANCING SUPPORT



**Rui Pinto**  
rui.pinto@iscte-iul.pt  
ext. 291900

#### PHD PROGRAMMES SUPPORT



**Nuno Eisele**  
nuno.eisele@iscte-iul.pt  
ext. 291903

#### COMMUNICATION BRU-IUL DBA PROGRAM MANAGER



**Andreia Garcia**  
andreia\_garcia@iscte-iul.pt  
ext. 291 904

[bru-unide@iscte.pt](mailto:bru-unide@iscte.pt)  
tel. +351 210 464 029  
Building I,  
floor 2, room 2W1

## CEI-IUL is a university-based multidisciplinary research center of the Instituto Universitário de Lisboa (ISCTE-IUL).

CEI-IUL aims at promoting interdisciplinary research in Social Sciences, International Relations and Economy, focusing in its areas of geographic specialization: Africa, Asia, Europe and Transatlantic Relations.

MORE INFORMATION [HERE](#)

### Board of Directors

#### DIRECTOR

Luís Nuno Rodrigues

#### SCIENTIFIC COMMITTEE

Ana Lúcia Sá

Ana Mónica Fonseca

Luís Nuno Rodrigues

Riccardo Marchi

### Research Unit Support

#### EXECUTIVE ADMINISTRATIVE SUPPORT POST-AWARD FINANCING SUPPORT



**Inês Marques Ribeiro**  
ines\_marques\_ribeiro@iscte-iul.pt  
ext. 292901

#### PRE-AWARD FINANCING SUPPORT



**Noémia Pizarro**  
noemia\_pizarro@iscte-iul.pt  
ext. 292902

#### COMMUNICATION MANAGER



**Raquel Silva**  
Raquel.Silva@iscte-iul.pt  
ext. 292900

[cei@iscte-iul.pt](mailto:cei@iscte-iul.pt)  
Tel.: +351 210 464 029  
Building I,  
floor 2, room 2W66

## CIES-IUL is a research unit accredited by the FCT with the classification of “Very Good”. The main scientific areas of CIES-IUL are sociology and public policy, but also develops relevant activity in the fields of political science, communication sciences, educational sciences, urban studies, social work and history.

The scientific research projects are mainly funded through open calls with scientific evaluation promoted by national and European agencies/foundations, but researchers also carry out applied research projects on the basis of the consolidated scientific skills of the centre, many of which are public-policy oriented.

The centre’s research groups are as follows: Inequalities, Migrations and Territories; Knowledge Society, Competences and Communication; Family, Generations and Health; Politics and Citizenship; Work, Innovation and Social Structures of the Economy; Modern and Contemporary History.

MORE INFORMATION [HERE](#)

### Board of Directors

#### DIRECTOR

João Sebastião

#### SUBDIRECTORS

Patrícia Ávila

Renato Miguel do Carmo

#### SCIENTIFIC COMMITTEE

Guya Accornero

João Sebastião

Luís Capucha

M<sup>ª</sup> João Vaz

Rosário Mauritti

### Research Unit Support

#### PRE-AWARD FINANCING SUPPORT



**Neide Jorge**  
neide.jorge@iscte-iul.pt  
ext. 291806



**Daniela Santos**  
daniela.guerreiro.santos@iscte-iul.pt  
[gcp.cies@iscte-iul.pt](mailto:gcp.cies@iscte-iul.pt)  
ext. 291802

#### POST-AWARD FINANCING SUPPORT



**Carla Salema**  
carla.salema@iscte-iul.pt  
ext. 291804



**Ana Ferreira**  
ana.ferreira@iscte-iul.pt  
ext. 291803

#### PHD PROGRAMMES SUPPORT



**José Ferreira**  
jose.carlos.ferreira@iscte-iul.pt  
ext. 291808



**Sara Silva**  
sara.silva@iscte-iul.pt  
[doutoramentos.cies@iscte-iul.pt](mailto:doutoramentos.cies@iscte-iul.pt)  
ext. 291805

[cies@iscte-iul.pt](mailto:cies@iscte-iul.pt)  
Tel. +351 21 0464 018  
Building I,  
floor 2, room 2W10

**CIS-IUL is a research unit that develops research, research-based intervention and scientific training in Psychology, focusing on Social and Organizational Psychology within the framework of the social sciences.**

It is closely linked to the Department of Social and Organizational Psychology of ISCTE-IUL (DEPSO), and its Laboratory of Social and Organizational Psychology (LAPSO).

CIS-IUL is accredited by the Foundation for Science and Technology (FCT) and has been classified as “Very good” in the international evaluations regularly carried out on an external basis by the FCT. It is a center of reference in several areas at the national and international level (e.g., social cognition, social justice, community psychology, gender relations, organizational psychology, risk perception, emotions, intergroup relations).

MORE INFORMATION [HERE](#)

## Board of Directors

### DIRECTOR

Carla Moleiro

### SUBDIRECTORS

Ana Rita Guerra  
Elizabeth Collins

### SCIENTIFIC COMMITTEE

Carla Moleiro  
Fernanda Paula Castro  
Joana Alexandre  
Maria Manuela Calheiros  
Sónia Bernardes

## Research Unit Support

### EXECUTIVE ADMINISTRATIVE SUPPORT



Sara Fernandes  
smcfs@iscte-iul.pt  
ext. 291702

### PRE AND POST-AWARD FINANCING SUPPORT\_EU PROJECTS



Leonardo Sousa  
leonardo.sousa@iscte-iul.pt  
ext. 291704

### PRE AND POST-AWARD FINANCING SUPPORT\_FCT & NATIONAL PROJECTS



Andreia Pólvara  
andreaia\_polvora@iscte-iul.pt  
ext. 291703

### PHD PROGRAMMES SUPPORT



Joana Sousa  
joana.filipa.sousa@iscte-iul.pt  
ext. 291215

### TECHNICAL SUPPORT



Neide Carvalho  
neide\_carvalho@iscte-iul.pt  
ext. 291700

cis@iscte-iul.pt  
Tel.+351 21 0464 017  
Building I,  
floor 2, room W17

**CRIA is a leading Portuguese research unit in Anthropology regularly involved in the development of theoretical and applied research projects, publishing, the promotion of events for scientific debate and the diffusion of research results, as well as national and international networking.**

Formally an association, CRIA is hosted by four public university structures: FCSH/NOVA, U.Coimbra, ISCTE-IUL, UMinho. This reinforces CRIA as a network environment supporting the research activities of almost 120 PhD researchers, and facilitates joint efforts regarding postgraduate studies and advanced training.

All activities within CRIA are organized into four main research groups that join together individual scientific interests, providing further ground for collaboration and concerted action: Circulation and Place-making; Environment, Sustainability and Ethnography; Governance, Policies and Livelihoods; Practices and Politics of Culture.

CRIA also hosts several thematic lines and smaller groups devoted to particular topics: visual cultures and arts; health; Islamic contexts; informal resources, State and social capital; religion.

MORE INFORMATION [HERE](#)

## Board of Directors

### DIRECTOR

Antónia Pedroso de Lima

### SUBDIRECTORS

Catarina Frois  
Cristina Santinho

### SCIENTIFIC COMMITTEE

Antónia Lima  
Catarina Frois  
Cristina Santinho  
Frédéric Vidal

## Research Unit Support

### EXECUTIVE ADMINISTRATIVE SUPPORT COMMUNICATION AND EVENTS



Mafalda Melo e Sousa  
mafalda.melo.sousa@cria.org.pt  
ext. 295704

### PRE-AWARD FINANCING SUPPORT POST-AWARD FINANCING SUPPORT



Manuela Raminhos  
manuela.raminhos@cria.org.pt  
ext. 295701



Maria João Seabra  
maria.seabra@cria.org.pt  
ext. 295702

### EDITORIAL SUPPORT TO ETNOGRÁFICA



cria@cria.org  
Tel. +351 21 0 464 057  
Building I,  
floor 2, room 2W2

Ana Carrapato  
ana.carrapato@cria.org.pt



Catarina Mira  
catarina.mira@cria.org.pt  
ext. 295706



**DINÂMIA'CET – IUL, Centre for Socioeconomic and Territorial Studies is an ISCTE-IUL research unit which combines fundamental and applied research on economic, social and cultural topics. It carries out advanced international research systematically grounded on interdisciplinarity.**

With the aim of framing a new approach to sustainable development, our research seeks to contribute to the understanding of the contemporary world through the analysis of the contexts, the actors and the consequences of change, with a focus on institutional frameworks, and through extensive recourse to comparative approaches. Devoting special attention to the dynamics and changes of the Portuguese society, the researchers of DINÂMIA'CET-IUL are engaged in contributing to the design of the future.

Activities taking place at DINÂMIA'CET-IUL include advanced training (masters and PhD Programmes). The Centre is invested in the articulation between teaching and research, in line with international higher education institutions. It nurtures the transfer of scientific knowledge through seminars, conferences and publications. DINÂMIA'CET-IUL publishes an online journal, CIDADES, Comunidades e Territórios, available online with full open-access and referenced by IBSS, Latindex, EBSCO, RCAA and Revues.org, and a Working Paper series, both peer-reviewed. It also

participates in publishing Portuguese Journal of Social Science. These activities are supported by a close-knit network of partnerships with other national and international research units, public agencies and civil society players.

In advanced training, the Centre is actively engaged in 10 ISCTE-IUL Master and 3 PhD programmes, namely in economics and public policies (in monetary, territorial, innovation and human resources fields), architecture, urban studies, development studies, social and solidarity economy, business law and, since 2015, environmental studies. D'C is the host institution for a considerable number of PhD students (70) and 8 Post-Doc researchers, many of which with a full-time grant position. DINÂMIA'CET - IUL hosts over 120 dedicated researchers. Our interdisciplinary approach and consistent results have sustained an external appraisal of Very Good by the Foundation for Science and Technology (FCT) through its international evaluation panels.

MORE INFORMATION [HERE](#)

## Board of Directors

### DIRECTOR

Pedro Costa

### SUBDIRECTORS

Ana Costa  
Pierre Guibentif

### SCIENTIFIC COMMITTEE

Pedro Costa  
Helena Lopes  
Maria Eduarda Gonçalves  
Teresa Marat-Mendes  
Paulo Tormenta Pinto

## Research Unit Support

### COMMUNICATION AND PLANNING OFFICER



Maria José Rodrigues  
dinamia@iscte-iul.pt  
ext. 293101

### SCIENCE MANAGER OFFICER



Maria João Machado  
mjoao.machado@iscte-iul.pt  
ext. 293102

### POST-AWARD FINANCING SUPPORT



Fátima Santos  
fatima.santos@iscte-iul.pt  
ext. 293103

### PUBLICATIONS OFFICER



Mariana Braga  
mariana.braga@iscte-iul.pt  
ext. 293105



Bruno Vasconcelos  
bruno.vasconcelos@iscte-iul.pt  
ext. 293104

dinamia@iscte-iul.pt  
Tel. +351 210 464 031  
Building I,  
floor 2, room 2W4



**The ISTAR-Information Sciences and Technologies and Architecture Research Center is a ISCTE-IUL unit that has the mission to carry out applied and multidisciplinary research in the convergence of areas like Computer Science and Information Technologies, Mathematics (applied to computational problems), Architecture and Urbanism (in its digital dimensions, either conceptual, modelling, simulation or fabrication).**

MORE INFORMATION [HERE](#)

## Board of Directors

### DIRECTOR

Nuno Guimarães

### SUBDIRECTORS

Miguel Sales Dias  
Carlos Costa  
Jorge Louçã  
Fernando Brito e Abreu

### SCIENTIFIC COMMITTEE

Nuno Guimarães  
Carlos Costa  
Miguel Sales Dias

## Research Unit Support

### EXECUTIVE ADMINISTRATIVE SUPPORT



Fátima Esteves  
fatima.esteves@iscte-iul.pt  
ext. 292300

istar@iscte-iul.pt  
Building II,  
floor 0, room D10  
Tel. +351 21 0464 023

---

**Instituto de Telecomunicações (IT) is a private, non-profit organization, of public interest. It is a partnership of eight institutions with research and development in the field of telecommunications, of which ISCTE-IUL is a part.**

IT is actively involved in fundamental and applied research both at national and international levels. Simultaneously it is committed to foster higher education and training, by hosting and tutoring graduate and postgraduate students. It also plays its role towards public society with public awareness initiatives, knowledge transfer to industry, and by providing consulting services on a non-competing basis.

MORE INFORMATION [HERE](#)

## Board of Directors

---

### DIRECTOR

Isabel Alexandre

### SUBDIRECTORS

Octavian Postolache

Luís Cancela

### SCIENTIFIC COMMITTEE

Isabel Alexandre

Luís Cancela

Octavian Postolache

---

## Research Unit Support

---

### EXECUTIVE ADMINISTRATIVE SUPPORT



**Fátima Estevens**

fatima.estevens@iscte-iul.pt  
ext. 292300

Tel. +351 21 0464 023  
Building II, floor 0, room D08  
it-iul@iscte-iul.pt

---

## International Relations Office

**The International Relations Office (IRO) is responsible for supporting general international policy and activities, monitoring the development of all initiatives related to the internationalization of education (namely in the scope of academic cooperation and mobility) and in promoting and intensifying cooperation agreements and exchange programmes with foreign universities with the ultimate objective of raising education standards by giving students and teaching staff the opportunity to benefit from an experience abroad.**

The IRO gives assistance in developing European Commission funded education programmes such as Erasmus+ Actions.

With the support of the Research Support Office and the Research Units, IRO provides all the necessary guidance and information before and after the researchers arrival through the various challenges and new experiences

they may face, such as police registration, immigration and health service registration (e.g. visa, housing, language courses, etc.).

For visiting or exchange students, the IRO can act as a link to the coordinator/ advisor at the home university in any academic issues that may arise. The IRO also provides opportunities to get to know better ISCTE-IUL's students.

### CONTACTS

[iajuda@iscte-iul.pt](mailto:iajuda@iscte-iul.pt)  
Tel. +351 21 7903 209  
Sedas Nunes Building,  
floor 1, room 159 to 1515

## Information and Technology Services

**The Information and Technology Services are responsible for e-learning, student attendance monitoring, exam results information, hardware and multimedia support to teaching and research.**

Regarding the e-learning platform, their goal is to continuously evaluate and enrich it and provide information on its functionalities, thereby extending its use.

---

### CONTACTS

[iajuda@iscte-iul.pt](mailto:iajuda@iscte-iul.pt)

---

## Ethics Committee

**ISCTE-IUL is committed to the highest standards of integrity in research having, since 2011, an Ethics Committee (EC).**

The EC is an advisory body composed by three expert independent members on ethical issues in the areas of education, scientific research, community services and operation of an institution. The EC is responsible for applying the general principles and practical guidelines described in the Code of Ethical Conduct on Research, dated 2016. To obtain ethical support the researchers must request the Rector a deliberation from the EC and attach the full process.

---

Jorge Costa Santos (President)  
Maria Manuela Calheiros  
Manuel Pita

---

### EXECUTIVE ADMINISTRATIVE SUPPORT

Carlos Braceiro

---

### CONTACTS

[carlos.braceiro@iscte-iul.pt](mailto:carlos.braceiro@iscte-iul.pt)

---



## Intellectual Property

**Intellectual property (IP) is constituted by industrial property, copyright and associated property intellectual rights. The intellectual property rights vary from country to country.**

ISCTE-IUL rules the ownership, protection and exploitation of intellectual rights emerging from research carried out both at ISCTE-IUL, and in cooperation with other scientific institutions, and the results of the research materials.

---

### CONTACTS

[gai@iscte-iul.pt](mailto:gai@iscte-iul.pt)

---

## Recognition of Foreign Qualifications

**Academic recognition refers to recognition decisions made by competent academic bodies that allow a person to pursue further studies or confer the right to use a national title/degree from the host country on the basis of a degree conferred by a higher education institution in the country of origin.**

In Portugal there are two main procedures set up in two legal diplomas on recognition of foreign higher education qualifications:

» **Decree-Law n<sup>o</sup> 341/2007<sup>1</sup>** of 12 October which sets up a new regime, based on the principle of mutual trust, for the automatic recognition of foreign academic degrees of a level and nature and with objectives that are identical to the degrees of licenciado, mestre and doutor awarded by Portuguese higher education institutions. Under this new regime only public higher education institutions are entitled to recognise a foreign degree to the corresponding degrees of licenciado mestre and doutor. However, the 3rd cycle degree (PhD) can only be recognised by universities or by the Directorate General for Higher Education.

» **Decree-Law n<sup>o</sup> 283/83<sup>2</sup>** of 21 June which establishes a system of equivalence/recognition based on the scientific re-evaluation of the work carried out by the applicant with a view to obtaining the foreign degree and on a case by case basis assessment of the merit of the foreign higher degrees/diploma. According to this diploma only higher education institutions are incumbent to decide upon awarding the equivalence/recognition.

Besides the above mentioned legislation there is also specific legislation Decree-Law n<sup>o</sup> 93/96 of 16 July holders of 3rd cycle diplomas (PhD) awarded by the Instituto Universitário de Florença.

Source: DGES- Direção Geral de Ensino

<sup>1</sup> For more information at [http://www.dges.mec.pt/en/pages/naric\\_pages/academic\\_recognition/Decree-Law341\\_2007.html](http://www.dges.mec.pt/en/pages/naric_pages/academic_recognition/Decree-Law341_2007.html)

<sup>2</sup> For more information at [http://www.dges.mec.pt/en/pages/naric\\_pages/academic\\_recognition/Decree-Law283\\_83.html](http://www.dges.mec.pt/en/pages/naric_pages/academic_recognition/Decree-Law283_83.html)

## Laboratories

Six laboratories at ISCTE-IUL support the research and teaching activities: **Communication Sciences Laboratory, Laboratory of Digital Visual Culture, Informatics Laboratory, Laboratory of Social and Organizational Psychology, Telecommunications Laboratory and VITRUVIUS FabLab.**



### Communication Sciences Laboratory

The Communication Sciences Lab (LCC-IUL) is focused on the analysis of communication practices in their different models - from digital to analogic and from text to image, passing through sound.

In a context marked by educational innovation procurement and by research diversification in science communication, the LCC-IUL lab offers its users a multifunctional space where they can conduct experiments and analyses that require access to specialized resources and tools.

Master students, PhD students and researchers in Communication Sciences can use the lab as well as journalists related with training initiatives of these masters and PhD students.

#### CONTACTS

Décio Telo  
icc@iscte-iul.pt  
Tel. +351 217 650 291

#### LOCATION

Building Ala Autónoma, floor 1, room AA124



### Informatics Laboratory

The Informatics Lab is a cluster of computers that supports teaching and research activity in multidisciplinary research in the convergence of areas like Computer Science and Information Technologies, Mathematics (applied to computational problems), Architecture and Urbanism (in its digital dimensions, either conceptual, modelling, simulation or fabrication):

- Digital Living Spaces;
- Information Systems;
- Software Systems Engineering;
- Complexity and Computational Modelling.

#### CONTACTS

istar@iscte-iul.pt

#### LOCATION

Building II, floor 0, room D0.10; D0.17



### Laboratory of Digital Visual Culture

The Lab of Digital Visual Cultures is a technological and scientific structure equipped with digital technologies for the production and edition of image and sound.

It offers support to the research and teaching of Anthropology with a focus on experimentation and creation of products and solutions for the communication of anthropological knowledge.

It is open to researchers from the Center for Research in Anthropology (CRIA) that want to develop research projects that combine ethnographic practice and audiovisual production.

The lab also hosts short and medium-term courses. It works in collaboration with the Department of Anthropology and it was created from a partnership between CRIA and ISCTE-IUL.

#### CONTACTS

Décio Telo  
lcvd.cria@iscte-iul.pt  
Tel. +351 217 650 229

#### LOCATION

Building Ala Autónoma, floor 1, room AA126



### Telecommunications Laboratory

The Telecommunications Labs provide support in the research and education of MSc and PhD engineer students on the broad subject area of Telecommunications. The labs have appropriate prototype and measurement equipments besides several computers. Each laboratory is associated to one specific research topic. The available laboratory topics are:

- Radio Systems;
- Optics Communications and Photonics;
- Information Technology;
- Multimedia Signal Processing;
- Network Architecture and Protocols;
- Instrumentation and Measurements.

#### CONTACTS

Fátima Estevens  
flice@iscte-iul.pt

#### LOCATION

Building Ala Autónoma, floor 1, room AA124



## Laboratory of Social and Organizational Psychology

LAPSO is the laboratory used for Psychology research, discovery, and learning at ISCTE-IUL. It was formed in 2002 through a collaboration between the Center for Investigation and Social Intervention (CIS-IUL) and the Department of Social and Organizational Psychology of ISCTE-IUL (DEPSO). LAPSO encompasses the physical space of the laboratory, but also the associated equipment, materials, and staff. With the objective to promote the development of skills in performing Psychological research, LAPSO welcomes research developed by students at all levels of education (undergraduate, masters, and doctoral) associated with DEPSO, as well as professors and senior researchers associated with DEPSO and CIS-IUL.

---

### CONTACTS

Helena Santos  
lapso@iscte-iul.pt  
ext. 292400

### LOCATION

Building II, floor 0, room D009

---



## VITRUVIUS Fablab ISCTE-IUL

Vitruvius FabLab ISCTE-IUL is a space for knowledge sharing, manufacturing and innovation. With the development of information technology, there are an increasing number of tools that can be used in the creative and fabrication processes. With this laboratory is intended to develop CAD/CAM modeling to produce architectural models, exploration of modular building systems, design solutions based on participatory design processes to give solutions to communities, seeking to solve real and local problems.

The laboratory serves not only for internal investigation in various fields such as sociology, informatics, and management but also established a strong network of partnerships with international universities, industries and different individuals of various creative areas who need custom prototyping services. The digital fabrication laboratory supports innovation through the materialization of ideas.

---

### CONTACTS

vitruviusfablab@iscte.pt  
[www.http://vitruviusfablab.iscte-iul.pt](http://vitruviusfablab.iscte-iul.pt)  
Tel. +351 210 464 026  
ext. 292600

### LOCATION

Building II, 0 floor, room D0.04

---

## Observatories



### Inequality Observatory

**The Inequality Observatory is a platform to scientific research and the dissemination of knowledge, a large number of social dimensions of inequality are addressed by the Observatory's research and dissemination activities, e.g. inequalities in employment, income and wealth, education, qualification and skills, gender and age, race and ethnicity, health and lifestyles, among others.**

The Observatory is an independent structure, set up and coordinated by the Centre for Research and Studies in Sociology (CIES-IUL), having as partners the Institute of Sociology, at the University of Porto (IS-UP), and the Centre for Social Studies, at the University of Azores (CES-UA). Making available information and analyses on inequality to the larger public, fostering citizenship and contributing to the design and evaluation of public policies.

The Inequality Observatory is a founding member of the European Network Inequality Watch.

---

#### CONTACTS

Director: Renato Miguel do Carmo  
 Tel. +351.210 464 018  
<http://observatorio-das-desigualdades.com>  
[observatorio-das-desigualdades.cies@iscte-iul.pt](mailto:observatorio-das-desigualdades.cies@iscte-iul.pt)

---



### Emigration Observatory

**The Emigration Observatory - OEm provides evidence-based analysis of data on Portuguese emigration to inform media, public and policy debates, and to generate high quality research.**

The Observatory is an independent structure, set up and coordinated by the Centre for Research and Studies in Sociology (CIES-IUL), having as partners the Institute of Sociology, at the University of Porto (IS-UP), and the Centre for Social Studies, at the University of Azores (CES-UA). Making available information and analyses on inequality to the larger public, fostering citizenship and contributing to the design and evaluation of public policies.

The Inequality Observatory is a founding member of the European Network Inequality Watch, studying international migration from and to Portugal.

---

#### CONTACTS

Director: Rui Pena Pires  
 Tel. +351.210 464 018  
[www.observatorioemigracao.pt](http://www.observatorioemigracao.pt)  
[observatorioemigracao@iscte-iul.pt](mailto:observatorioemigracao@iscte-iul.pt)

---



## EurWORK - European Observatory of Working Life

Former Eurofound observatories on industrial relations (EIRO) and working conditions (WWCO) were combined to form EurWORK: the European Observatory of Working Life. DINÂMIA'CET-IUL, as national representative of the former EIRO, currently co-operates with EurWORK.

EurWORK gathers large resources on working conditions and industrial relations, and is supported by a network of European correspondents that spans through all European Union member states and Norway. Eurofound carries out two regular surveys on labour subjects: the European Working Conditions Survey (EWCS) and the European Company Survey (ECS), which are a major additional resource for the observatory.

EurWORK is centered on a set of labour-related issues, such as main actors and institutions; individual and collective labour relations; skills, learning and employability; wages; work health and well-being; work organization; working time and work-life reconciliation; and current developments of labour in Europe.

---

**CONTACTS**  
information@eurofound.europa.eu

---

## European Employment Observatory (EEO)

The European Employment Observatory (EEO) is an information system on employment policies and labour market trends in the European Union (EU). Its mission is to analyze forecasts of developments in the labour markets, particularly in those sectors of activity most affected by the completion of the internal market.

Its main tasks are collecting information and statistical data from EU Member States; analyzing large developments by sector; and disseminating results to economic and social players, specifically European social partners.

The Observatory is composed of representatives from the Member States, the EU candidate countries and the member countries of the European Economic Area (EEA). It operates through a steering group and a network of experts, SYSDEM - Community System of Documentation on Employment. SYSDEM is a network of experts from independent national research institutes. This network contributes towards achieving the EEO's missions through: producing reports on evaluations and research on the impact of labour market policy; analyzing policy priorities relating to employment; and analyzing national employment action plans. DINÂMIA'CET-IUL is the host institution of the national expert (Reinhard Naumann) who updates the information about the Portuguese labour reality.



## Observatório das Famílias e das Políticas de Família (OFAP)

The purpose of the Observatório das Famílias e das Políticas de Família (OFAP) is to deepen and disseminate knowledge about families and family policies in Portuguese society.

To observe the evolution of practices and dynamics of family life, as well as their impact on demographic patterns, and to monitor and disseminate family legislation and family policies - that is, government actions and other initiatives that regulate and support family life in Portugal - are the two main lines of action of OFAP.

Created in early 2010, it is an organic structure of the Instituto de Ciências Sociais da Universidade de Lisboa (ICS-UL), where it is located, and has the scientific coordination of Karin Wall. At the end of the same year was made into a partnership with the Center for Research and Studies in Sociology (CIES-IUL).

---

**CONTACTS**  
Scientific Coordination: Karin Wall  
Tel. +351.210 464 018  
<http://observatorio-das-desigualdades.com>  
[observatorio-das-desigualdades.cies@iscte-iul.pt](mailto:observatorio-das-desigualdades.cies@iscte-iul.pt)

---

## Other Platforms: BLOG Changing World

CEI-IUL also publishes Changing World, an academic multidisciplinary blog edited by Inês Marques Ribeiro and coordinated by Ana Mónica Fonseca. 'Changing World' seeks to contribute towards this inclusive transformation, providing accessible expert analysis and informed opinion about international issues, and making scientific research available to all audiences, in order to stimulate a constructive dialogue between social science and society.

---

**CONTACTS**  
<http://blog.cei.iscte-iul.pt>

---

## ISCTE-IUL University Library

**The ISCTE-IUL Library role is to provide access to the information resources required by members of the Institute for researching, learning and teaching.**

The Library has a wealth of material to support learning and research at the University; over 90.000 printed volumes and an extensive range of high quality electronic resources. It receives approximately 30.000 periodicals (digital and paper).

ISCTE-IUL Library specializes in Management, Social Sciences, Technologies and Architecture. Students benefit from every service imaginable in a full-service bibliographic facility. In addition, PhD students have access to dedicated areas that include individual workstations and meeting rooms. There is also the possibility of accessing the some financially-oriented databases, such as Bloomberg and Datastream. Remote access to excellent research systems such as B-On (22.000 scientific journals and 22.000 e-books available), ABI/Inform Complete, Web of Science, Scopus, JSTOR, among others. A Library Catalogue can also be consulted locally or online.

### UNIVERSITY LIBRARY OPENING HOURS & SERVICES

Monday to Friday: 9.30-21.00  
Saturday: 9.30-13.30

**Website** [www.iscte-iul.pt/biblioteca.aspx](http://www.iscte-iul.pt/biblioteca.aspx)

## ISCTE-IUL Repository

**The ISCTE-IUL Repository was established with the purpose of storing, preserving, disseminating and providing access to the intellectual output of ISCTE-IUL in digital format.**

The repository aims to bring together in one place, all the institution's scientific publications, and thus contribute to increasing its visibility and impact and ensuring the preservation of ISCTE-IUL's intellectual memory.

In addition to the above, for the authors (faculty and researchers), the ISCTE-IUL Repository provides a set of added-value services, such as access to statistics on the number of views and downloads, with information on their provenience, in relation to each document deposited. In the case of professors, who are required to have their curriculum vitae on the DeGóis Platform, there is already a feature that allows the interconnection of this platform and the ISCTE-IUL Repository, enabling the transfer of records in both directions.

### CONTACTS

**Facebook** [facebook.com/Biblioteca.ISCTE-IUL](https://www.facebook.com/Biblioteca.ISCTE-IUL)

**E-mail** [biblioteca@iscte-iul.pt](mailto:biblioteca@iscte-iul.pt)

**Phone** + 351 217 903 024

**Fax** + 351 217903025

## CIÊNCIA-IUL Science Portal ISCTE-IUL

**The CIÊNCIA-IUL portal allows its users to manage their scientific production by adding and/or importing information on their publications, talks and other scientific and academic achievements.**

Each author has their own public profile in which they can manage their public information like contacts, external links, curriculum information, academic qualifications, teaching activities, supervisions and scientific production. The portal also gives access to statistics on the scientific production of the entire ISCTE-IUL or its internal units, such as research units, schools and departments. Each author can compare their work to the work of the average researcher on different units of ISCTE-IUL and also have access to citation and journal information of their publications.

All the contents on the website are available both in Portuguese and English.

### CONTACTS

[ciencia@iscte-iul.pt](mailto:ciencia@iscte-iul.pt)

## Curriculum DeGóis

**The curricula management system (curriculum DeGóis) allows to the researcher the insertion of his personal data, his address, both personal and professional, his academic activities, spoken languages, prizes and awards and research fields, as well as all kinds of scientific productions and the detailed information on the research projects in which he is/was engaged.**

It also allows the inclusion of information related to supervisions and presence in juries, and it is interconnected with the ISCTE-IUL Repository. With the objective of identifying the scientific domains of the researchers' works, DeGóis allows the establishment of relations between the scientific productions and the Fields of Science table from OECD. In this way, by applying to an international standard, it becomes possible to compare the Curriculum DeGóis with other models coming from other scientific communities.

The DeGóis Curricula Platform is propriety of the FCT, an organism of the Ministério da Ciência, Tecnologia e Ensino Superior, that, through a protocol with the Brazilian Science and Technology Ministry, the GAVEA laboratory from the Department of Information Systems of the University of Minho and the STELA research group from the Federal University of Santa Catarina in Brazil, provides the basic principles of the DeGóis Platform and establishes a legal-institutional format in which the project will be developed.

[Register now.](#)

## Institutional affiliation of ISCTE-IUL

The correct use by researchers of the ISCTE-IUL affiliation is of extreme importance, being indispensable to document the scientific production of the institution and to assure that the research units are not understated and that their prestige is being recognized.

The researchers should indicate their affiliation as follows:

**Instituto Universitário de Lisboa (ISCTE-IUL), Lisboa, Portugal**

or

**Instituto Universitário de Lisboa (ISCTE-IUL), [Research Unit name], Lisboa, Portugal**

The regulation can be consulted [here](#) (only in portuguese).

If the researchers conduct their work at another institution, but have any sort of link, even if temporarily, with ISCTE-IUL they should include the two affiliations.

If the researchers have no link to ISCTE-IUL, but carry out their research at ISCTE-IUL, even temporarily, they should also indicate the two affiliations.

Researchers should assure that their affiliations are correct, according to the standards described above.

## ISCTE-IUL Scientific Journals and Publishers

ISCTE-IUL promotes the dissemination of knowledge through 8 peer review journals, indexed in international databases.

All journals are listed in CAPES and a large number are indexed in Scopus and the Web of Science, which makes them a relevant option for the publication and dissemination of scientific results in the international context.



### Cadernos de Estudos Africanos

Cadernos de Estudos Africanos is a scientific journal published by CEI-IUL. Focusing on sub-Saharan Africa, the journal welcomes contributions from the international scientific community working within the purview of the social sciences and specializing in African Studies. Since its first issue in July 2001, Cadernos de Estudos Africanos has been published on a regular, semi-annual basis.

**PUBLISHER** CEI, ISCTE-IUL

**EDITOR-IN-CHIEF** Clara Carvalho

**PERIODICITY** Biannual

**PUBLICATION LANGUAGES** Portuguese, Italian, English, French, Spanish

**KEYWORDS** African Studies, Social Sciences and Humanities

**WEBSITE**  
<http://cei.iscte-iul.pt/cadernosafriicanos/>

**EDITORIAL SUPPORT**  
cadernos.cei@iscte-iul.pt  
ext. 292900

**INDEXING AND ABSTRACTING BIBLIOGRAPHIC DATABASES**

Scopus, SciELO, Revues.org, ProQuest, EBSCOhost, e-revist@s, Latindex

**OTHER DIRECTORIES AND RATINGS**

Capes-WebQualis, Index Copernicus Internacional, DOAJ, SHERPA/RoMEO

**ISSN** 1645-3794



## CIDADES, Comunidades e Territórios

CIDADES, Comunidades e Territórios is an academic journal in the scientific area of Urban Studies that was established in 2000 by a team of researchers from the former Centre for Territorial Studies, consolidating a heritage of scientific research and academic work at ISCTE-IUL for over twenty years and currently published semiannually by the Dinâmia/CET-IUL.

CIDADES, now in e-journal format, pursues the objective of disseminating research and discussions in the scientific area of Urban Studies, seeking to consolidate itself in the academic publishing scene, nationally and internationally, as a reference publication in its field.

**PUBLISHER** DINÂMIA'CET - IUL, ISCTE-IUL

**EDITOR-IN-CHIEF** Pedro Costa

**PERIODICITY** Biannual

**PUBLICATION LANGUAGES** Portuguese, Italian, English, French, Spanish

**KEYWORDS** Urban Studies, Architecture, Sociology

**WEBSITE**

<http://cidades.dinamiacet.iscte-iul.pt/index.php/CCT>

**EDITORIAL SUPPORT**

Mariana Leite Braga  
cidades.dinamiacet@iscte-iul.pt  
ext. 293100

**INDEXING AND ABSTRACTING BIBLIOGRAPHIC DATABASES**

IBSS, EBSCOhost, Latindex

**OTHER DIRECTORIES AND RATINGS**

Capes-WebQualis, SHERPA/RoMEO, RCAAP

**ISSN** 2182-3030



## Etnográfica

Etnográfica is the only Portuguese journal dedicated exclusively to social and cultural anthropology. It is a dynamic and consolidated project, having gained reputation as a quality scientific publication with wide international recognition.

Etnográfica covers a wide range of ethnographic contexts, the journal stresses high-quality empirical research, varied analytical perspectives and theoretical innovation. Articles selected by the Editorial Committee are subjected to double-blind peer review by two experts in the field. Etnográfica reflects the diversity of theoretical perspectives, fields and places of production of contemporary anthropological knowledge, as well as the variety and richness of the examined social and geopolitical contexts.

**PUBLISHER** CRIA-IUL

**EDITOR-IN-CHIEF** Manuela Ivone Cunha

**PERIODICITY** Triannual

**PUBLICATION LANGUAGES** Portuguese, English, French, Spanish

**KEYWORDS** Anthropology

**WEBSITE**

<http://etnografica.revues.org/>

**EDITORIAL SUPPORT**

Catarina Mira  
etnografica@cria.org.pt  
ext. 722092

**INDEXING AND ABSTRACTING BIBLIOGRAPHIC DATABASES**

Scopus, Web of Science - SciELO Citation Index, Revues.org, SciELO, Anthropological Index Online, Latindex, EBSCOhost

**OTHER DIRECTORIES AND RATINGS**

SCImago SJR, ERIH Plus, Capes-Web-Qualis, Index Copernicus Internacional, ClassifICS, DOAJ, SHERPA/RoMEO

**ISSN** 0873-6561

**DIGITAL ISSN** 2182-2891





## Global Economics and Management Review

Global Economics and Management Review is a journal published by ISCTE-IUL Business School. Its analysis focuses on the trends and problems of a global market economy in transition, not only in the global outlook, but also in the context of nations and greater 'mega-regional' areas, such as the EU, Asia-Pacific or Southern Africa. The journal also includes theoretical or applied studies in various fields of management, comprehending problems of non-profit organizations and of social economy.

<b>PUBLISHER</b> Elsevier (INDEG-IUL ISCTE Executive Education)	<b>INDEXING AND ABSTRACTING BIBLIOGRAPHIC DATABASES</b> Scielo **
<b>EDITOR-IN-CHIEF</b> Paulo Bento	
<b>PERIODICITY</b> Biannual	
<b>PUBLICATION LANGUAGES</b> English	
<b>KEYWORDS</b> Economy and Management	<b>OTHER DIRECTORIES AND RATINGS</b> Capes-WebQualis**, DOAJ**
<b>WEBSITE</b> <a href="http://www.journals.elsevier.com/global-economics-and-management-review/">http://www.journals.elsevier.com/global-economics-and-management-review/</a>	
<b>EDITORIAL SUPPORT</b> Elisabete Alvarez Journal Manager e.alvarez@elsevier.com	<b>ISSN</b> 2340-1540

\*\*until 2013



## Ler História

Ler História is a publication focused on promoting studies in History and Social Sciences, boasting of scientific referees and of international circulation.

Ler História comprises articles resulting from research in the field of History and other Social Sciences. The submitted articles are subject to rigorous evaluation, and Ler História boasts of a group of authors of national and international reference.

<b>PUBLISHER</b> Ler História – Associação de Atividades Científicas	<b>INDEXING AND ABSTRACTING BIBLIOGRAPHIC DATABASES</b> Scopus, Revues.org, EBSCOhost, Latindex, Historical Abstracts
<b>EDITOR-IN-CHIEF</b> José Vicente Serrão	
<b>PERIODICITY</b> Biannual	
<b>PUBLICATION LANGUAGES</b> Portuguese, English, French, Spanish	
<b>KEYWORDS</b> History and Social Sciences	<b>OTHER DIRECTORIES AND RATINGS</b> Capes-WebQualis, ERIH Plus, SHERPA/RoMEO, DOAJ
<b>WEBSITE</b> <a href="http://lerhistoria.iscte.pt/frames.htm">http://lerhistoria.iscte.pt/frames.htm</a>	
<b>EDITORIAL SUPPORT</b> Mariana Leonor Francisco ler.historia@iscte-iul.pt	<b>ISSN</b> 0870-6182



## Portuguese Journal of Social Science

The Portuguese Journal of Social Science (PJSS), created in 2002, is a peer-reviewed cross-disciplinary journal focusing on research about Portuguese society. However, the journal takes a broad view and accepts articles that are not exclusively devoted to the Portuguese case. It particularly welcomes comparative studies.

While the journal concentrates on research articles it operates a flexible policy in respect of other types of submission, including book reviews.

<b>PUBLISHER</b> Intellect	<b>INDEXING AND ABSTRACTING BIBLIOGRAPHIC DATABASES</b>
<b>EDITOR-IN-CHIEF</b> Luis Nuno Rodrigues	Web of Science-Thomson Reuters-core, Scopus, Cambridge Scientific Abstracts, ISBSS, Sociological Abstracts, Worldwide Political Science Abstracts, Latindex, EBSCOhost
<b>PERIODICITY</b> Triannual	
<b>PUBLICATION LANGUAGES</b> English	
<b>KEYWORDS</b> Social Sciences and Humanities	<b>OTHER DIRECTORIES AND RATINGS</b>
<b>WEBSITE</b> <a href="http://pjss.iscte.pt/index.php/pjss">http://pjss.iscte.pt/index.php/pjss</a>	Capes-WebQualis
<b>EDITORIAL SUPPORT</b> <a href="mailto:pjss@iscte-iul.pt">pjss@iscte-iul.pt</a> ext. 722201	<b>ISSN</b> 1476-413X



## Revista de Gestão dos Países de Língua Portuguesa

Revista de Gestão dos Países de Língua Portuguesa (RGPLP), edited by INDEG/ISCTE-IUL in collaboration with the Fundação Getúlio Vargas, Rio de Janeiro, Brazil, is a quarterly publication that provides scientific approach and dissemination of different areas of Management, such as Strategy, Marketing, Human Resources, Tourism, Logistics, Finance, Accounting, Information

Systems, among others. Boasting of contribution from renowned national and foreign authors, RPBG comprises articles and case-studies.

<b>PUBLISHER</b> INDEG, ISCTE-IUL; Fundação Getúlio Vargas	<b>INDEXING AND ABSTRACTING BIBLIOGRAPHIC DATABASES</b>
<b>EDITOR-IN-CHIEF</b> Luís Reto (Portugal) and Bianor Scelza Cavalcanti (Brasil)	Thomson Reuters-SciELO Citation Index, Scielo
<b>PERIODICITY</b> Triannual	
<b>PUBLICATION LANGUAGES</b> Portuguese, English, Spanish	
<b>KEYWORDS</b> Management and Administration	<b>OTHER DIRECTORIES AND RATINGS</b>
<b>WEBSITE</b> <a href="http://indeg.iscte-iul.pt/pagina/rpbg">http://indeg.iscte-iul.pt/pagina/rpbg</a>	CAPEs-WebQualis, DOAJ
<b>EDITORIAL SUPPORT</b> <a href="mailto:revistas.indeg@iscte-iul.pt">revistas.indeg@iscte-iul.pt</a>	<b>ISSN</b> 1645-4464



## Sociologia, Problemas e Práticas

Sociologia, Problemas e Práticas is a scientific journal whose main purpose is to publish sociological analysis articles resulting from original research, the development of theory, or thematic evaluation.

It also boasts of interdisciplinary openness to works from other areas of social sciences.

It is directed towards an international audience. The journal Sociologia, Problemas e Práticas was established in 1986, since when it has been published without interruption. It is indexed in various international bibliographic databases.

**PUBLISHER** CIES, ISCTE-IUL

**EDITOR-IN-CHIEF** Maria das Dores Guerreiro

**PERIODICITY** Triannual

**PUBLICATION LANGUAGES** Portuguese, English, French, Spanish

**KEYWORDS** Social Sciences and Humanities

**WEBSITE** <http://sociologiapp.iscte-iul.pt/>

**EDITORIAL SUPPORT**

Mónica Monteiro  
sociologiapp@iscte-iul.pt  
Tel. + 351 217 903 238

**INDEXING AND ABSTRACTING BIBLIOGRAPHIC DATABASES**

SCOPUS, Web of Science-Thomson  
Reuteurs SciELO Citation Index, SciELO,  
EBSCOhost, Latindex, Sociological  
Abstracts

**OTHER DIRECTORIES AND RATINGS**

SCImago SJR, Capes-WebQualis, DOAJ

**ISSN** 0873-6529



## Mundos Sociais Publisher

Mundos Sociais, funded in 2010, is a publisher from CIES-IUL that promotes scientific publications of high quality in the areas of Sociology, Political Science, Anthropology, History, Education Sciences and other Social Sciences.

Besides the general catalogue, Mundos Sociais also publishes the journal “Sociologia, Problemas e Prática”, the collection “Questões de Partida” and the collection “Desigualdades” coordinated by the Inequality Observatory.

**DIRECTOR**

Patrícia Ávila

**EDITORIAL SUPPORT**

Lina Cardoso  
editora.cies@iscte-iul.pt  
Tel. +351 217 903 238  
Sedas Nunes Building, floor 2, room 2N3

RESEARCH  
WEEK 2017  
ISCTE-IUL

4

CAMPUS  
ISCTE-IUL

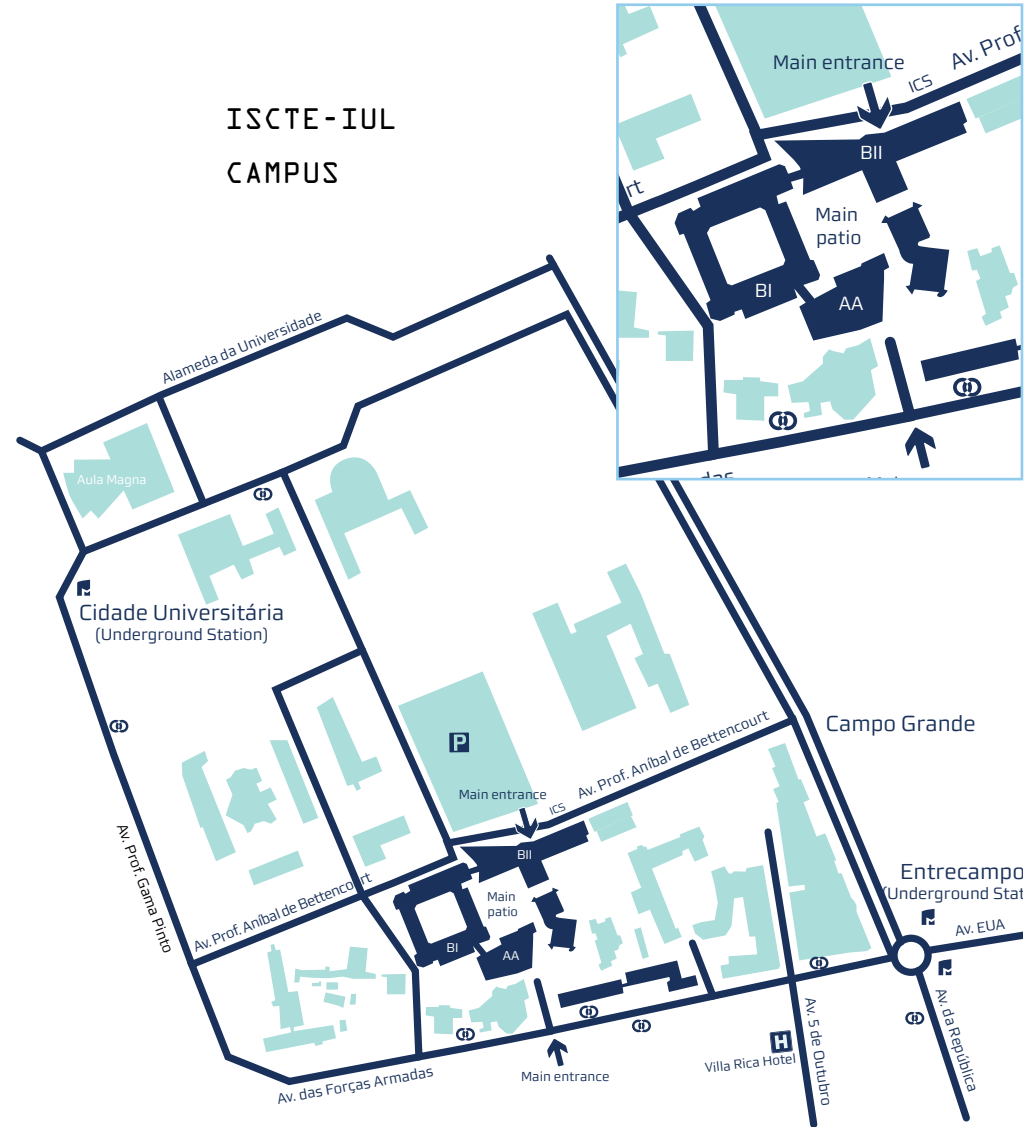
**ISCTE-IUL**  
Campus



**ISCTE-IUL is strategically located in the centre of Lisbon. On its doorstep lies a subway station as well as a large number of bus routes, allowing easy and fast access to any part of the city. Within a short walking distance there is a wide choice of hotels, restaurants and shops, as well as one of the largest sport and recreational centres in Lisbon. The airport is just ten minute drive away.**

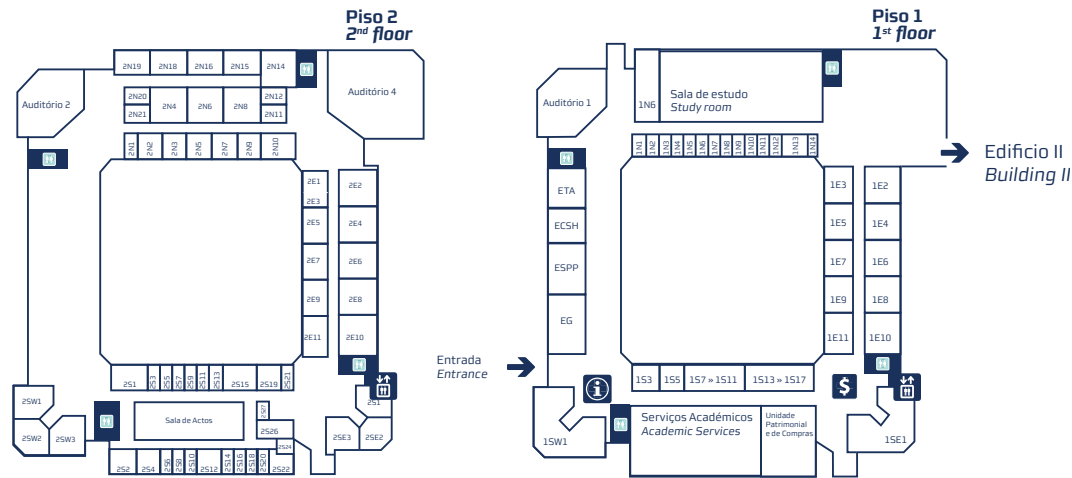
The ISCTE-IUL campus offers a wonderful atmosphere and facilities which include four buildings (45.000 m<sup>2</sup>), one of which is Building II, that opened in 2003 and received the Valmor Prize, Portugal's foremost award for architectural excellence.

**ISCTE-IUL**  
CAMPUS

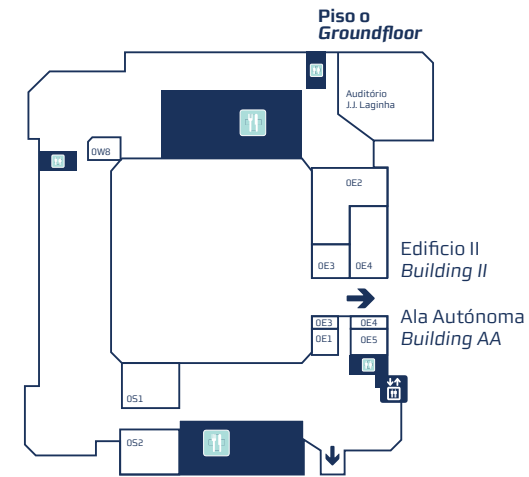


- AA – Building AA / Ala Autónoma
- BI – Sedas Nunes Building / Edifício Sedas Nunes
- BII – Building II / Edifício II
- ICS - Instituto de Ciências Sociais
- Parking
- Underground
- Bus

ISCTE - IUL  
CAMPUS  
SEDAS NUNES BUILDING  
EDIFÍCIO SEDAS NUNES

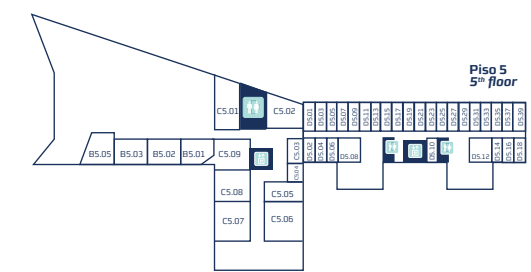
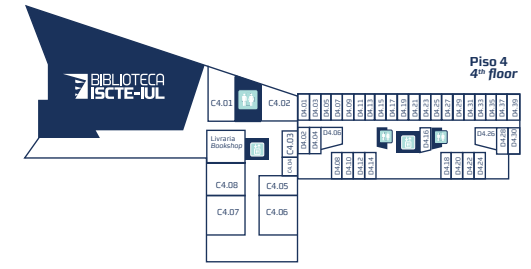
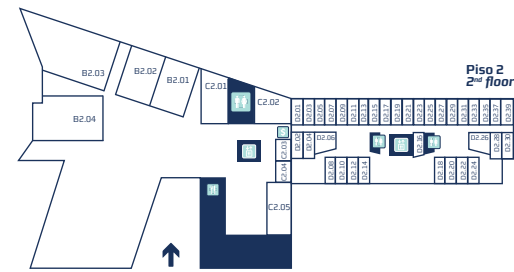
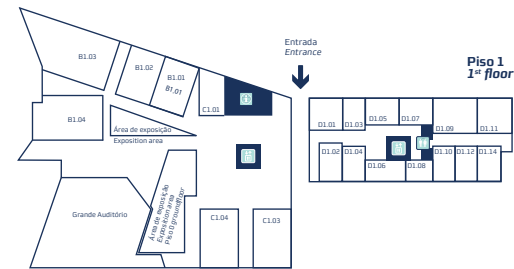


- Elevador Elevator
- Restaurante Restaurants
- Recepção Reception desk
- WC
- Multibanco ATM / cash Machines



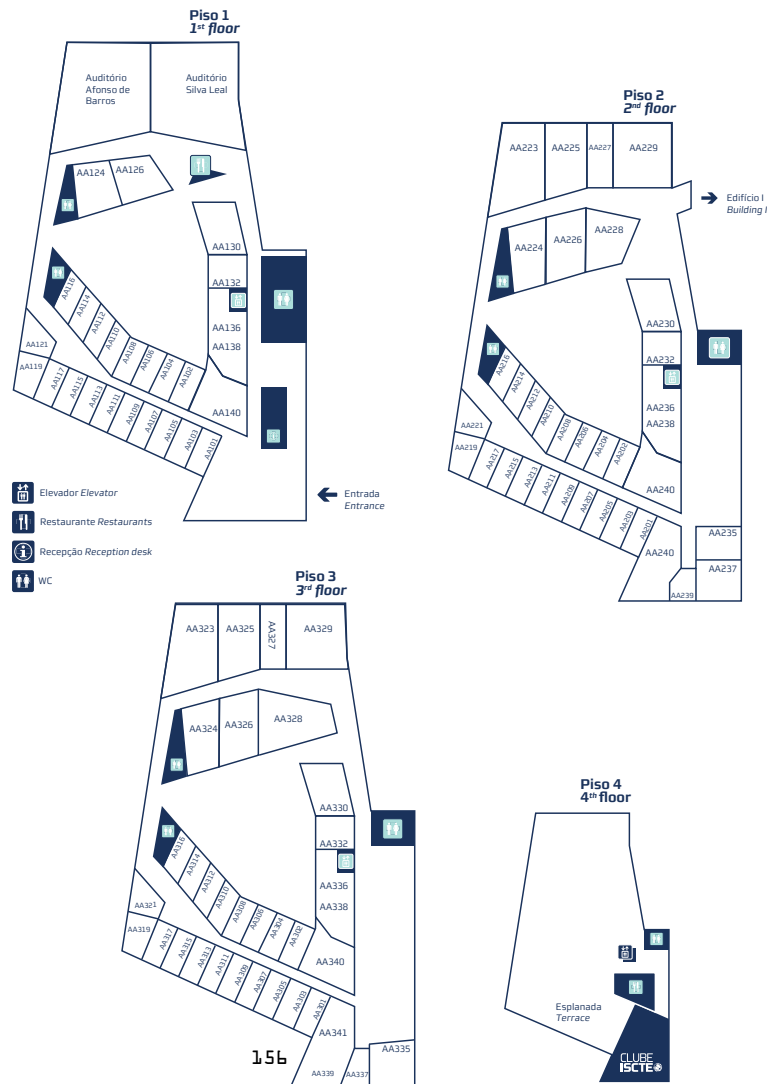
Ala Autónoma  
Building AA

ISCTE - IUL  
CAMPUS  
BUILDING II  
EDIFÍCIO II



- Elevador Elevator
- Restaurante Restaurants
- Recepção Reception desk
- WC
- Multibanco ATM / cash Machines

ISCTE-IUL  
CAMPUS  
BUILDING AA  
ALA AUTÓNOMA



PORTUGUESE  
LANGUAGE  
COURSES

Portuguese language courses are offered, in both semesters, to all international exchange and visiting students that want to improve their Portuguese for academic or personal reasons and can lead to the certificate of Portuguese as a Foreign Language.

The contact can be made at the Laboratory of Transversal Competences ([lct@iscte-iul.pt](mailto:lct@iscte-iul.pt)). In case you are searching for others foreign languages the contact should be the Language Course Centre ([atendimento.iscte@ccl.pt](mailto:atendimento.iscte@ccl.pt)).

FOR FURTHER DETAILS, PLEASE CONSULT [HERE](#)

CONTACTS

[ict@iscte-iul.pt](mailto:ict@iscte-iul.pt)  
[atendimento.iscte@ccl.pt](mailto:atendimento.iscte@ccl.pt)

---

## UNIVERSITY RESIDENCE



### The ISCTE-IUL University Residence meets some of the accommodation needs of its visiting students and professors.

Located in the 17th-century Santos-o-Novo Monastery, which is classified as a National Monument, on a small hill by the river Tagus in Lisbon's east end, the residence has a splendid view and is a short distance from the central railway station of Santa Apolónia, the traditional neighbourhood of Alfama, downtown Lisbon, Terreiro do Paço, and the new residential, retail and service area of Parque das Nações.

Since there are more applicants than vacancies, it will not be possible to provide accommodation at the hall residence for all exchange students. The criterion used is the date of arrival of the application form.

**MORE INFORMATION** [HERE](#)

---

## CAMPUS ART, CULTURE AND SPORTS



**ISCTE-IUL has different spaces and groups dedicated to promote culture, art and sports. From exhibitions and lectures to concerts and theatre productions, ISCTE-IUL offers a variety of events programming during the year.**

ISCTE-IUL University Library is a place where culture assumes several dimensions. It is an open and dynamic place where all cultural expressions are welcome.

- Thematic Bibliographic Exhibitions
- Library Talks
- Book of the month
- Library Talks
- Book of the month
- Books public presentation
- Cultural cycles
- Workshops
- Music in the Library
- Art in the Library
- Circle of cinema '4 decades, 4 movies'
- Other activities of extension and culture dinamization

---

### CONTACTS

[biblioteca@iscte-iul.pt](mailto:biblioteca@iscte-iul.pt)

---



---

## CAMPUS ART, CULTURE AND SPORT

---

### AEISCTE

The ISCTE-IUL students union (AEISCTE) is an autonomous organization held by the students of ISCTE-IUL. Its mission is to socially and culturally complement the students academic life.

You will be able to find information about events held not only in Lisbon, but also in other cities of Portugal. There, you can also find leaflets about concerts, performing arts and movie festivals that take place in Lisbon, and much more.

---

**CONTACTS**  
[aeiscte@iscte-iul.pt](mailto:aeiscte@iscte-iul.pt)

---

### CULTURE

“mISCuTEm” created since 2001 is the ISCTE-IUL theatre group, with the staging and actors direction by Ana Isabel Augusto. Registration for the mISCuTEm - Theatre Group ISCTE-IUL reopen in September.

---

**CONTACTS**  
[miscutem@gmail.com](mailto:miscutem@gmail.com)

---

### SPORTS

ISCTE-IUL students and academic/research—staff benefit from special conditions to access the sports facilities. Lisbon University Stadium (EUL): one of the largest sports centers in Lisbon, offers football pitches and rugby, cooper tracks, swimming pools and fitness among others.

---

**CONTACTS**  
[geral@eul.mctes.pt](mailto:geral@eul.mctes.pt)

The AEISCTE also offers a wide range of sporting activities such as handball, badminton, basketball, football, swimming, rugby and volleyball. In addition, the Association promotes a series of initiatives that extend to a variety of other sports. It is also possible to rent a bike and explore the city.

---

**CONTACTS**  
[aeiscte@iscte-iul.pt](mailto:aeiscte@iscte-iul.pt)

---

### EXHIBITION ROOM

ISCTE-IUL has an exhibition room on campus in building II, floor 1, that receives along the year several exhibitions dedicated to different themes.

---

**CONTACTS**  
[eventos@iscte-iul.pt](mailto:eventos@iscte-iul.pt)